

**REPLACEMENT PARTS
PIÈCES DE RECHANGE**

Hex. cap screws & washers	P-005	Boulons hexagonaux & rondelles
u-cup seal	P-009	Joint "u-cup"
O-ring	P-014	Joint torique
Socket cap screw	P-015	Boulons à 6 pans creux
Plug $\frac{3}{8}$ NPT	P-017	Bouchon $\frac{3}{8}$ NPT
Screws	P-034	Vis
Spring & clip assembly	P-046	Coulisseau
"T" channel	P-051	Magasin "T"
Optional pressure release valve	P-055	Valve optionnelle de surpression
Hammer	P-080	Marteau
White rubber cap	P-084	Caoutchouc du marteau
Gasket	P-107	Joint d'étanchéité
Bumper	P-125	Pare-chocs
Hex cap screws	P-128	Boulons hexagonaux
Standard "L" feeder channel	P-148	Magasin "L" standard
Handle grip	P-154	Gaine
<u>Screw-mount</u> driving blade	P-223 †	Tige de poussée montée par vis
Reinforcement plate	P-226	Plaque de renfort
Dowel pins	P-227	Goupilles
Base	P-235	Base
Safety assembly	P-261	Palpeur de sécurité
Safety element	P-262	Palpeur
"T" gate	P-285 †	Plaque guide "T"
<u>Screw-in mount</u> driving blade	P-323 †	Tige de poussée vissée
Foot	P-329	Plaque pied
Plastic base	P-433	Semelle
Head	P-506	Tête
Main body	P-516	Boîtier
O-ring	P-516B	Joint torique
Cylinder	P-518	Cylindre
Cylinder band-valve	P-518B	Élastique
Piston for driving blade P-223	P-522 †	Piston pour tige P-223
Main valve	P-543	Valve principale
Head cap	P-601	Chapeau
Disk	P-601A	Disque
Piston for driving blade P-323	P-622 †	Piston pour tige P-323
Actuator	P-642	Déclencheur
Actuator cap	P-644	Couvercle du déclencheur
"L" gate with block P-087	P-632 †	Plaque guide "L" et bloc P-087
"L" gate	P-632B †	Plaque guide "L"

Depending on tool configuration

†

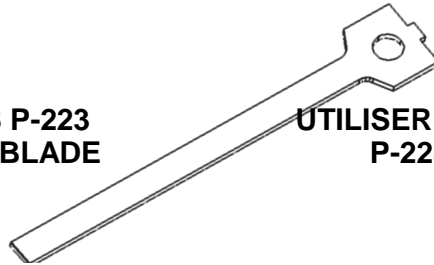
Selon la configuration de l'outil

For an updated parts list,
consult our web site at:www.primatech.ca/supportUne liste à jour des pièces est
disponible sur le site :www.primatech.ca/support

IMPORTANT

CHECK TOOL CONFIGURATION TO ORDER THE PROPER DRIVING BLADE

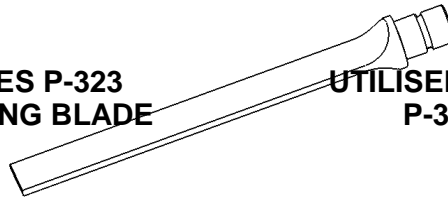
**PISTON P-522 REQUIRES P-223
SCREW-MOUNT DRIVING BLADE**



VÉRIFIER LA CONFIGURATION DE L'OUTIL POUR COMMANDER LA BONNE TIGE DE REMPLACEMENT

UTILISER LA TIGE DE REMPLACEMENT P-223 AVEC LE PISTON P-522

**PISTON P-622 REQUIRES P-323
SCREW-IN MOUNT DRIVING BLADE**



UTILISER LA TIGE DE REMPLACEMENT P-323 AVEC LE PISTON P-622

CAUTION

TO PREVENT INJURY, ALWAYS DISCONNECT AIR SUPPLY WHEN ADJUSTING, SERVICING OR DISASSEMBLING THE TOOLS.

AFTER ANY MAINTENANCE TO THE TOOL, REMOVE ALL CLEATS AND ACTUATE THE TOOL REPEATEDLY OVER A PIECE OF WOOD OR SUBFLOORING TO INSURE PROPER OPERATION; THEN TRY WITH CLEATS.

IMPORTANT

REFER TO THE INSTRUCTIONS MANUAL AND READ THE "SAFETY MEASURES" SECTION BEFORE USING OR SERVICING TOOLS.

ATTENTION

POUR ÉVITER TOUT RISQUE DE BLESSURE, TOUJOURS DÉCONNECTER L'ALIMENTATION EN AIR COMPRIMÉ LORS DE L'ENTRETIEN OU DU DÉMONTAGE DE L'OUTIL.

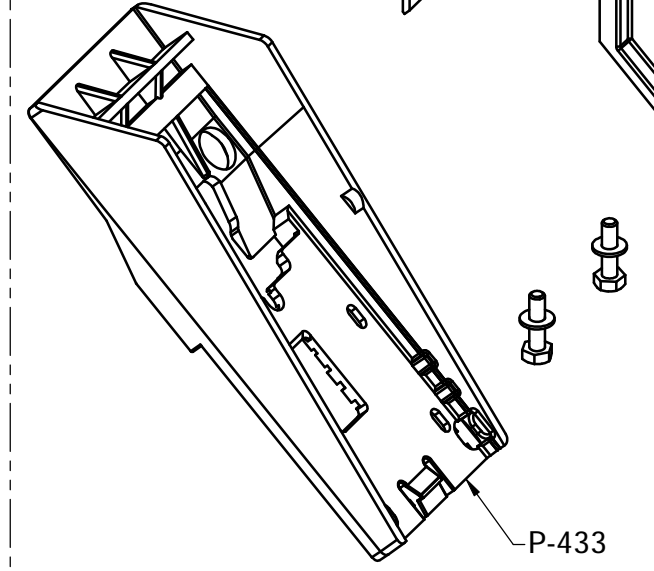
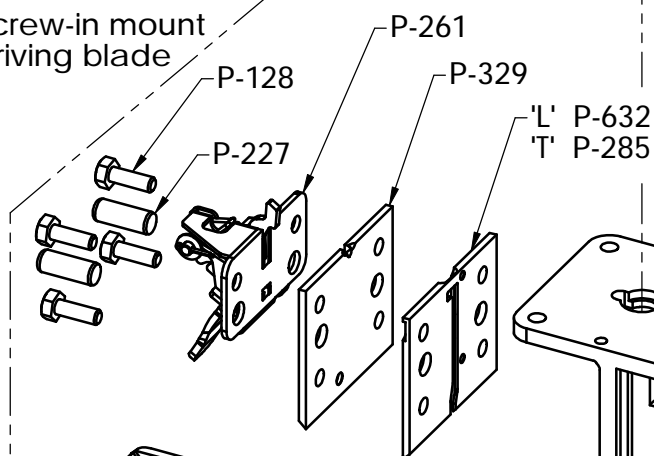
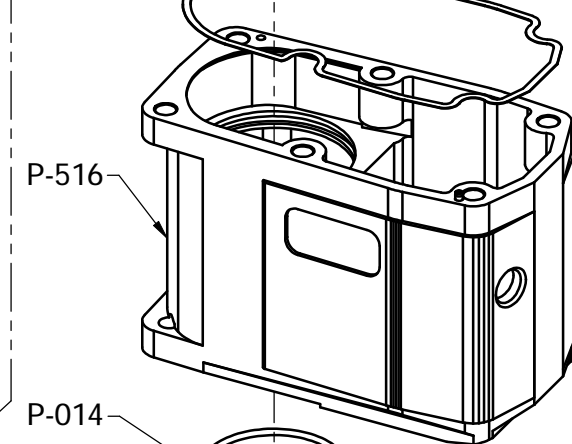
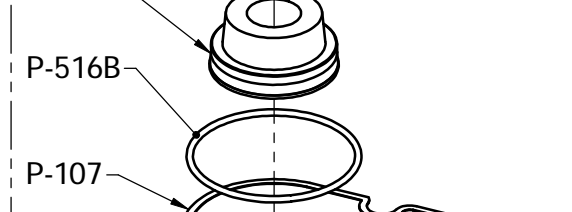
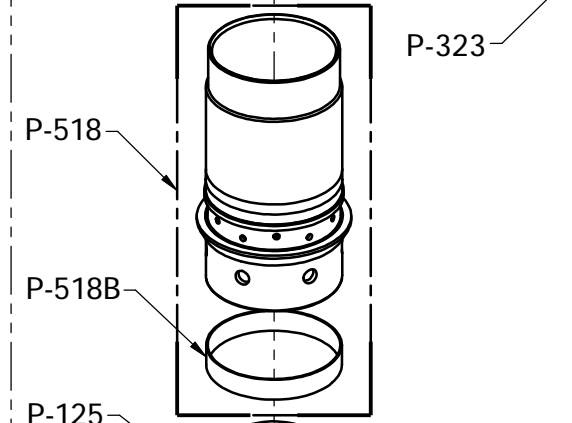
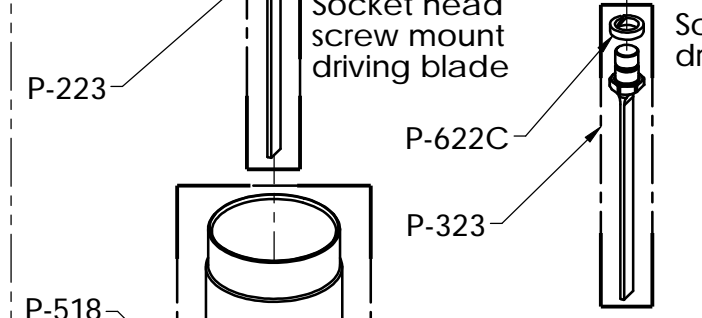
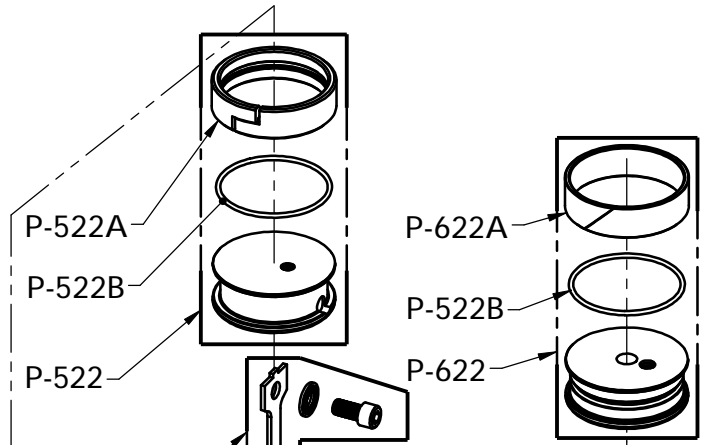
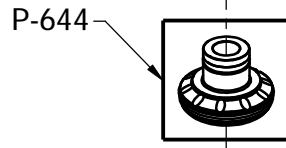
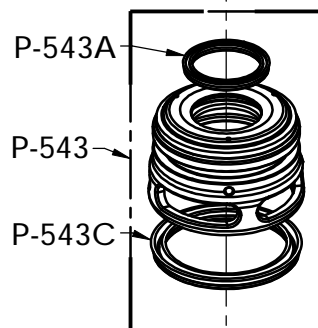
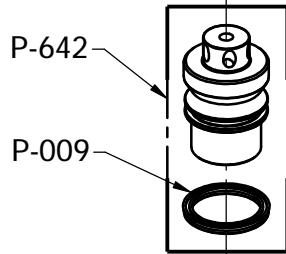
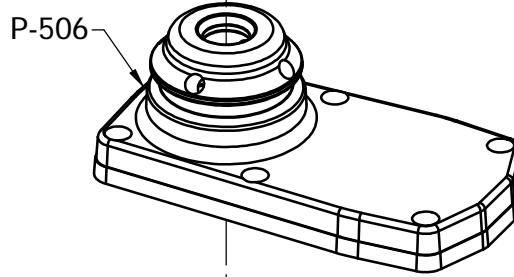
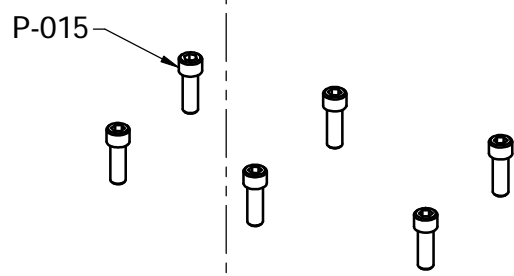
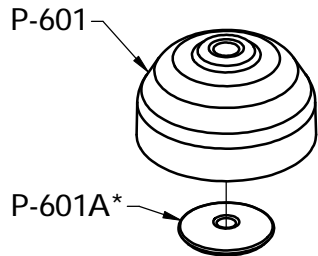
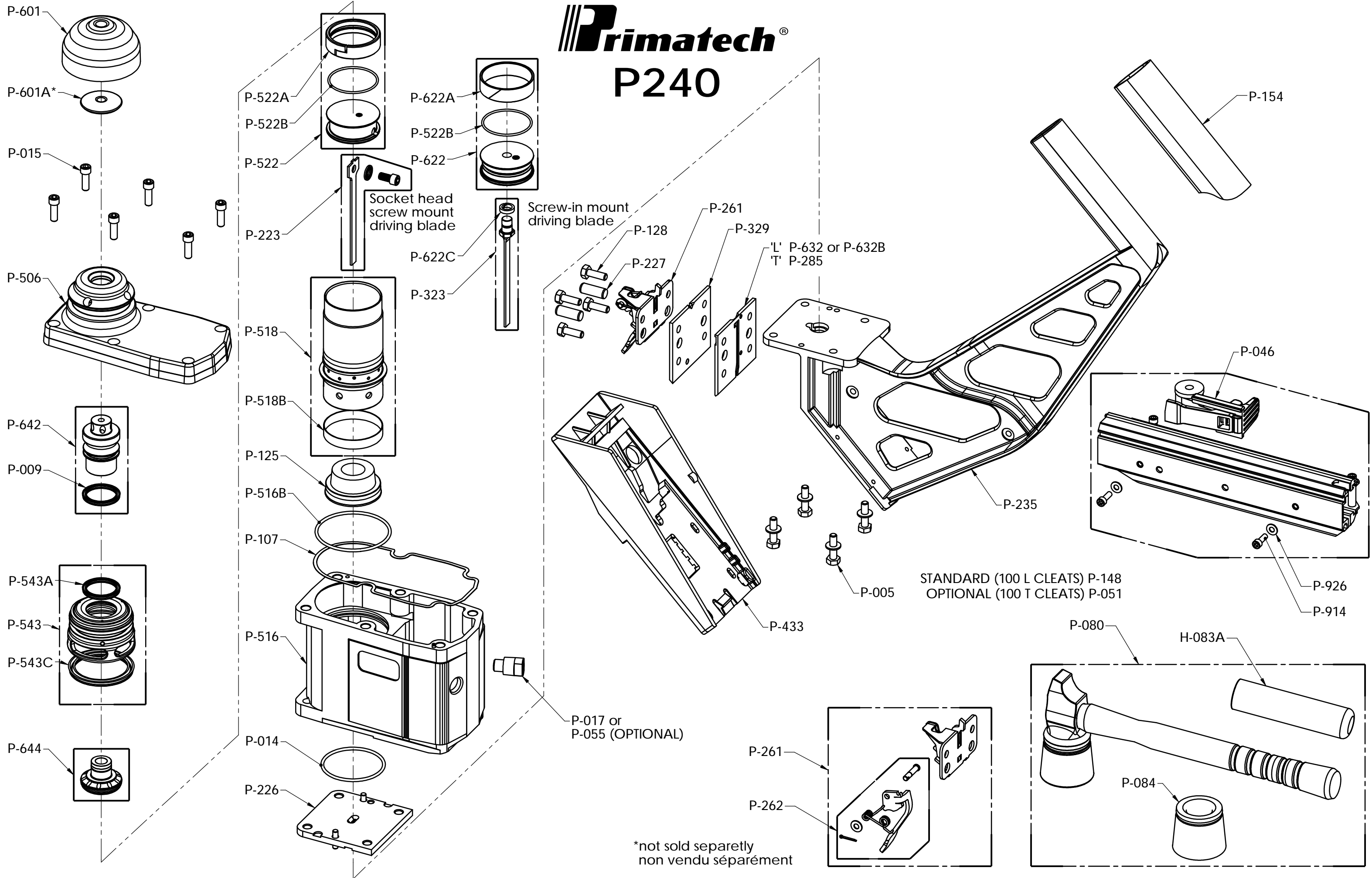
APRÈS TOUT ENTRETIEN DE L'OUTIL, TOUJOURS VÉRIFIER SON BON FONCTIONNEMENT **SANS CLOU, SUR UNE PIÈCE DE BOIS OU SUR LE SOUS-PLANCHER.**

IMPORTANT

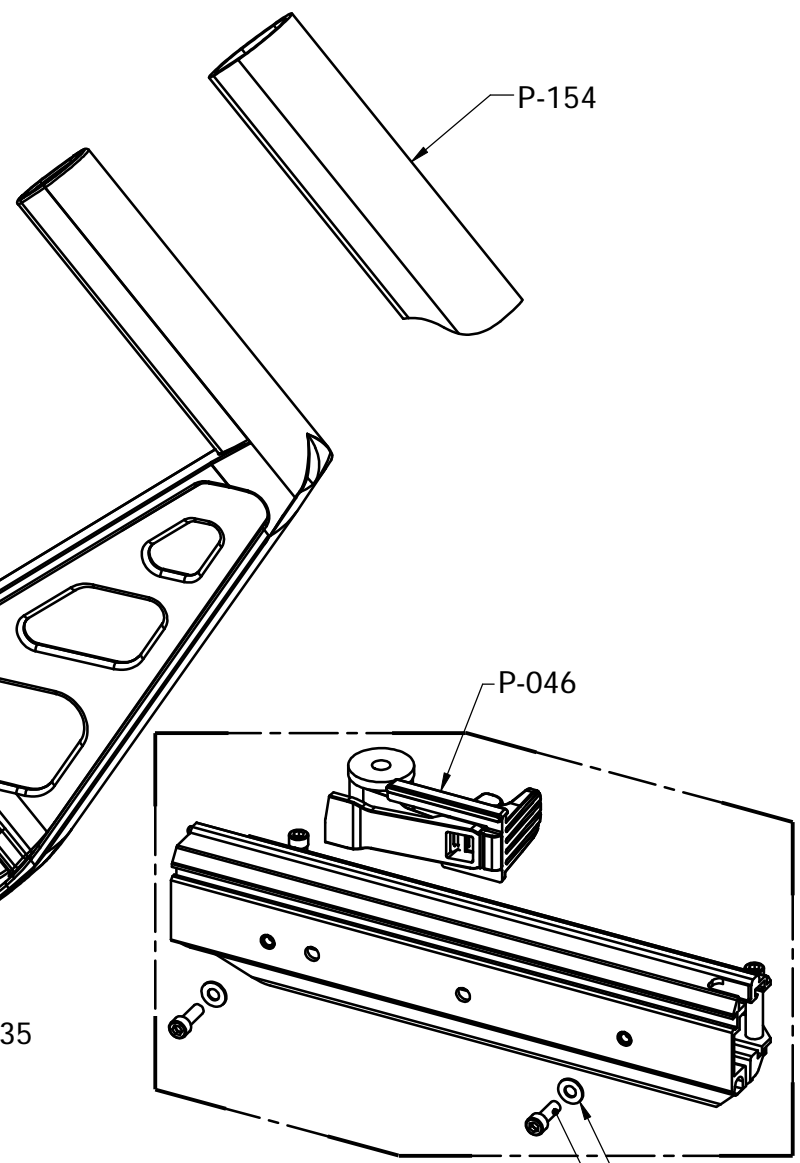
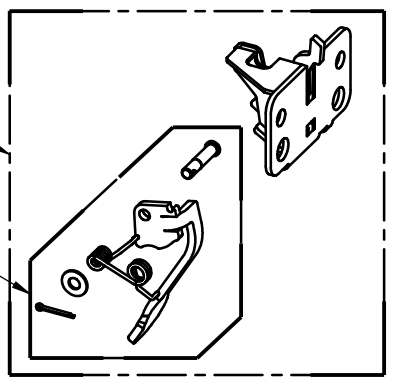
RÉFÉRER À LA NOTICE D'UTILISATION ET LIRE LA SECTION "POINTS DE SÉCURITÉ" AVANT D'UTILISER OU RÉPARER L'OUTIL.



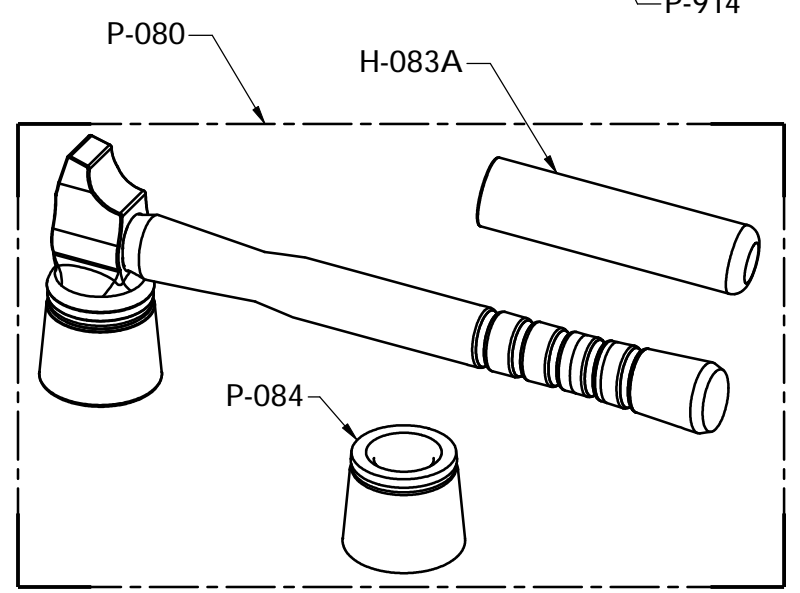
Primatech® P240



P-017 or P-055 (OPTIONAL)



STANDARD (100 L CLEATS) P-148
OPTIONAL (100 T CLEATS) P-051



*not sold separately
non vendu séparément