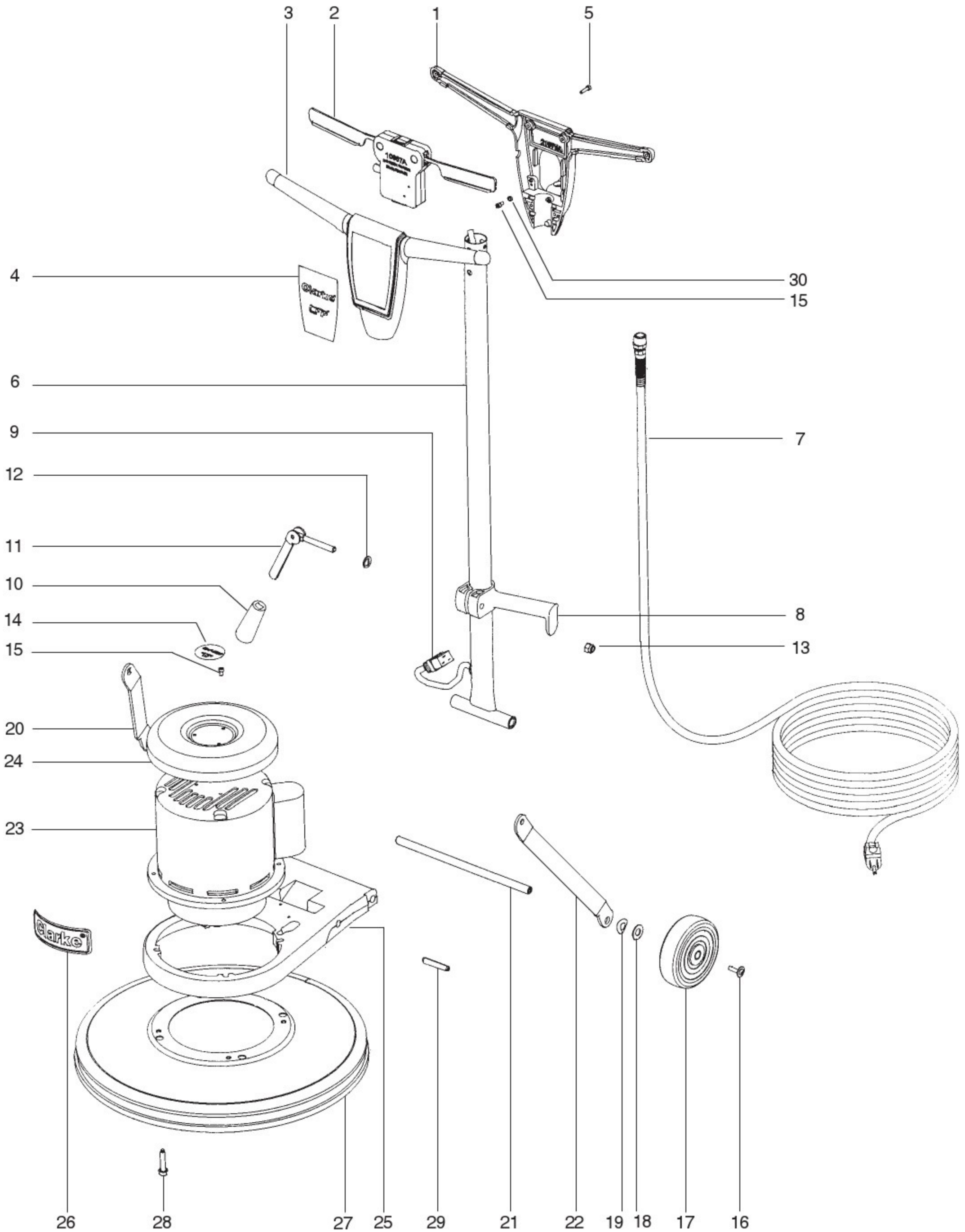


---

**Clarke<sup>®</sup>**  
**CFP Series**  
**120V & 230V**  
Section II  
**Parts and Service Manual**

(70880A)

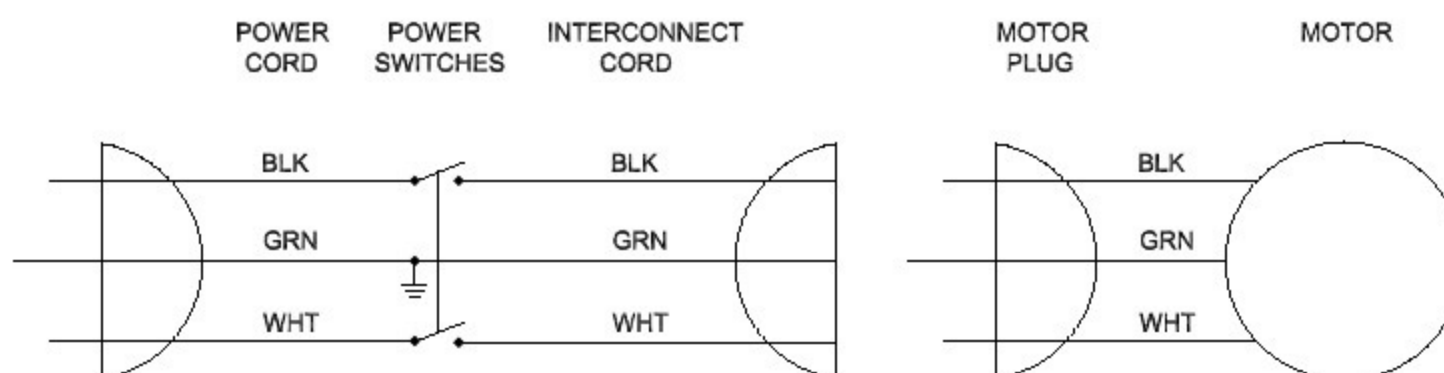
Clarke®  
CFP1700  
Assembly Drawing 7/07



**Clarke®**  
**CFP1700**  
**Assembly Drawing Parts List 7/07**

Ref.	Part No.	Description	Qty.
1	21075A	Handle, Back	1
2	10687A	Module, Interlock	1
3	21074A	Handle, Front	1
4	71020A	Label, Handle	1
5	80284A	Screw, 10-32 x 3/4	6
6	61373A	Tube, Handle	1
7	40788A	Cord, 14/3 x 50'	1
7A	467504	Strain Relief	(1)
7B	47711A	Terminal FIFQD	(2)
8	50781A	Clamp, Handle	1
9	40789A	Cord, Interconnect	1
10	56057675	Grip, Handle	1
11	441401	Cam, Assembly	1
11A	441301	Bolt, Cam Lock	(1)
11B	461404	Cam, Locking	(1)
11C	53662A	Pin, Coiled	(1)
12	980349	Washer, Wear	1
13	920342	Nut, 3/8-16ESNA	1
14D	71023A	Label (CFP-1700 120/60)	1
15	80290A	Screw, 10-32 x 3/8	5
16	80292A	Screw, 1/4-20 x 1	2
17	56201018	Wheel	2
18	980648	Washer, 17/32 x 1 1/16 Plain	2
19	80295A	Washer, Bowed	2
20	61741A	Link Arm-Right	1
21	61725A	Axle	1
22	61740A	Link Arm-Left	1
23A	Pg. 30,31	Motor/Gbx	1
24A	61716A	Drip Cover	1
25	21088A	Mainframe	1
26	73323A	Label, Motor Clarke	1
27B	11006A	Housing, Asm.	1
	61715A	Housing	(1)
	30381A	Bumper	(1)
28	80294A	Screw, 5/16 - 18	4
29	53833A	Pin, Split 1/2	2
30	80291A	Washer, Flat #10	1
NI	30638A	Pad Driver*	1

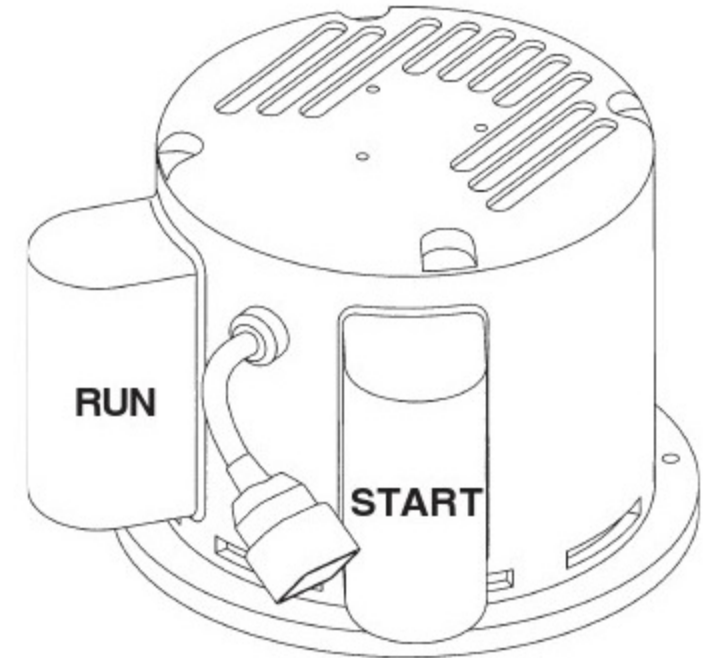
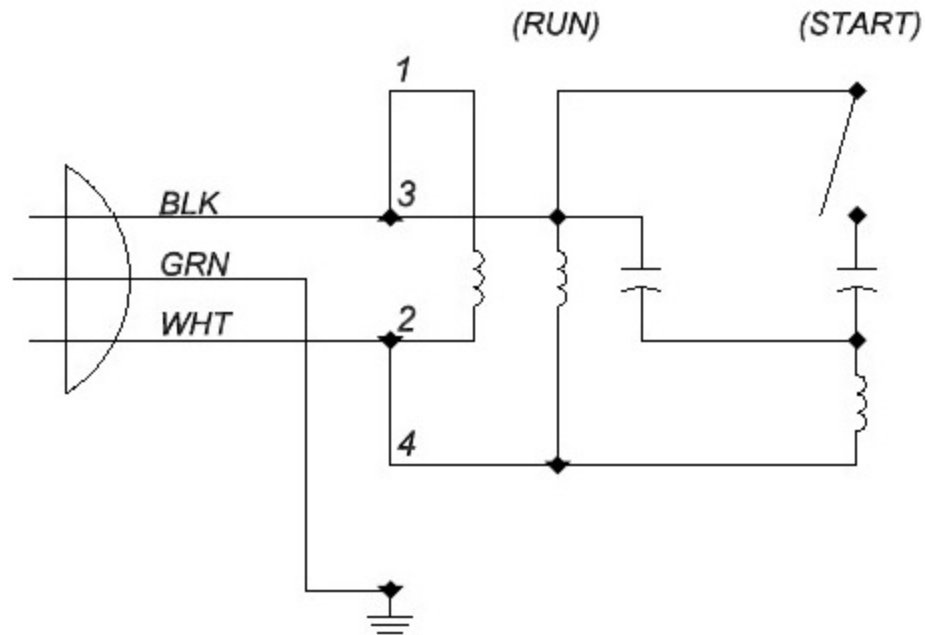
**CFP-1700**  
**Machine Schematic 7/05**



**Clarke®  
CFP 1700**

**Motor Assembly Drawing, Parts List and Schematics 3/08**

*ELECTRICAL SCHEMATIC  
(120V)*



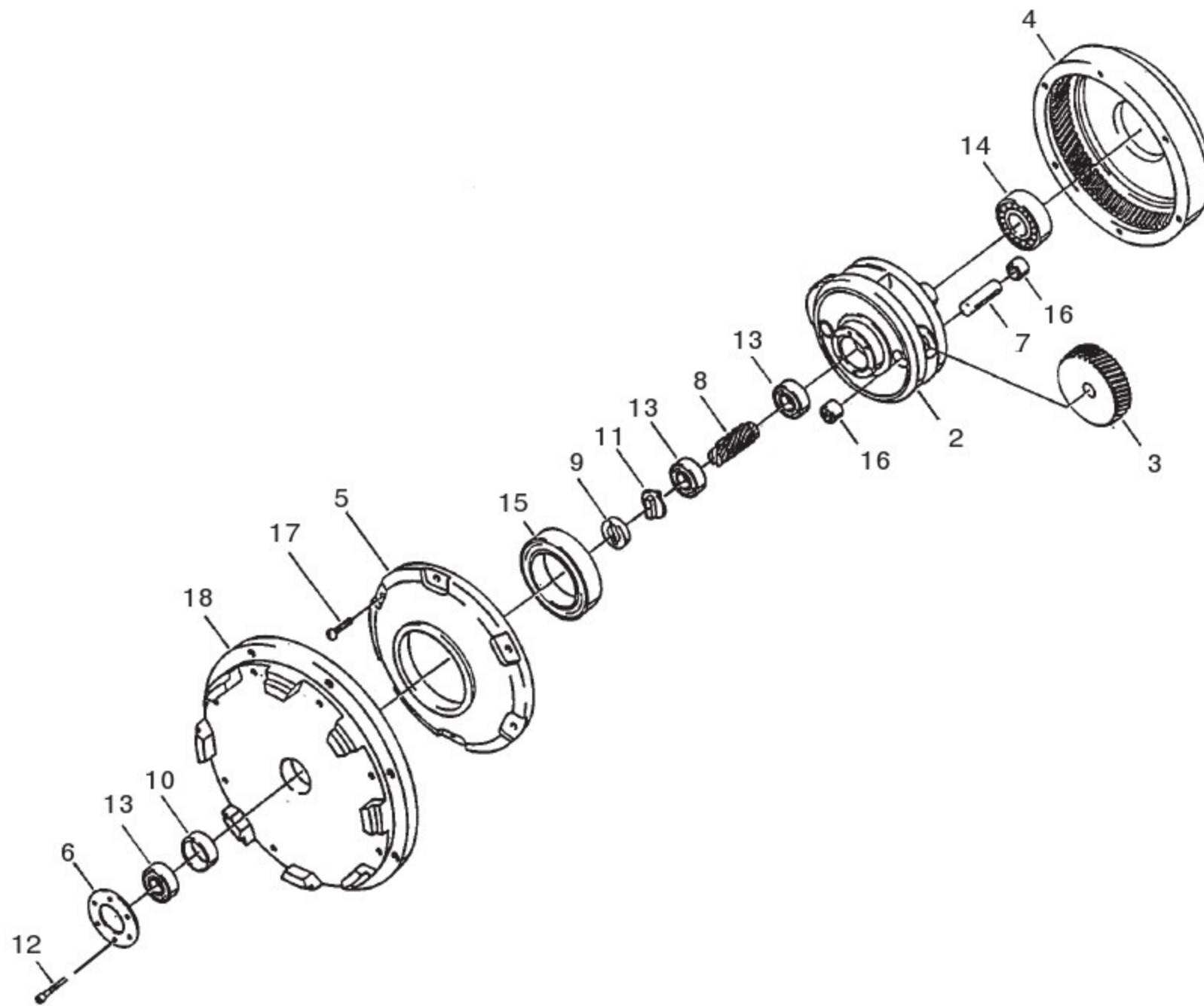
<b>VOLTS / Hz</b>		<b>120 / 60</b>
<b>MOTOR PART NUMBER</b>		<b>40763A</b>
<b>Part No.</b>	<b>Description</b>	<b>Qty</b>
40693A	Rotor, 1HP, 60Hz	NA
53193A	Rotor, 1.5HP, 60Hz	1
40694A	Capacitor, Start	1
40695A	Capacitor, Run	NA
53191A	Capacitor, Run	1
40696A	Stator, 1HP, 60Hz	NA
53189A	Stator, 1.5HP, 60Hz	1
40697A	Cover, Capacitor	NA
53360A	Cover, Capacitor	2
40698A	End Shield, Aluminum	1
40699A	Cover, Wiring	1
53190A	Switch, Start	1
53195A	Centrifugal 4-Pole 60Hz	1
40899A	Centrifugal 4-Pole 50Hz	NA
70787A	Label, Connection	1
80274A	Through Bolt 1/4-20	NA
85303A	Screw, 8-32 x 3/8	11
902550	Bearing, Ball-6203	1
53848A	Plate, Mounting	1
80141A	Screw, 10-32 x 1	6
911177	Wire Nut - Orange	2
41053A◆	Cord, IEC	1
747553◆	Strain Relief	1

NOTE:◆ indicates a change has been made since the last publication of this manual.



Clarke®  
CFP1700

Gearbox Assembly Drawing & Parts List 7/07



GEARBOX PART NUMBER			53646A
Ref.	Part No.	Description	Qty
NI	503802	Grease - 14 Ounce Tube	(1)
2	52020A	Cage, Gear	NA
3	54408A	Gear, Planet	3
4	54856A	Gear, Ring	1
5	54858A	Cover, Gearbox	1
6	56922A	Retainer, Bearing	1
7	58312A	Shaft, Planet	3
8	58313A	Gear, Pinon	1
9	58314A	Retainer, Shaft	1
10	58520A	Spacer, Sleeve	1
11	69195A	Coupling, Shaft	1
12	80141A	Screw, 10-32 x 1	6
13	902606	Bearing, Ball- 6002	3
14	902654	Bearing, Ball- 6204	1
15	902736	Bearing, Ball- 6010	1
16	902737	Bearing, Needle	6
17	84808A	Screw, 10-24 x 3/4	6
18	53848A	Plate, Mounting	1

**NOTE: Use 9 ounces of grease in Gearbox 53645A and 8 ounces of grease in Gearbox 53646A**