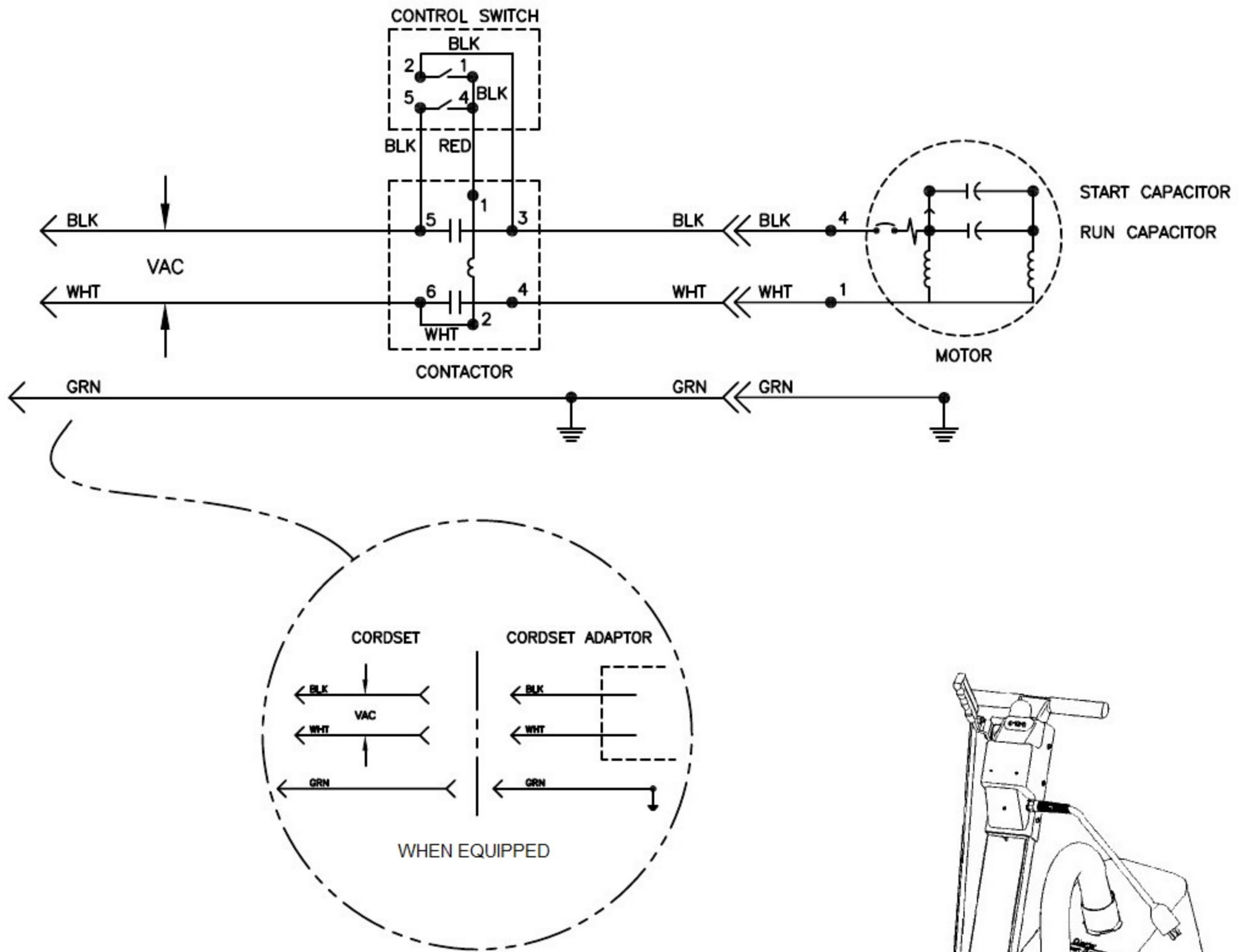


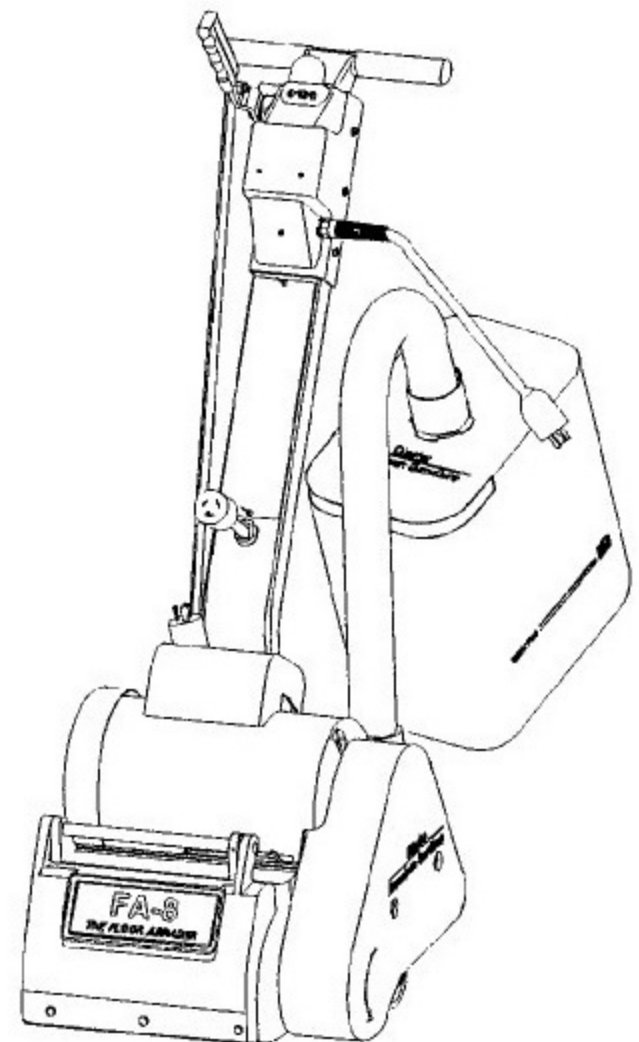
Clarke® American Sanders®

FA-8 THE FLOOR ABRADER

Operator's Manual MODEL: 07166A

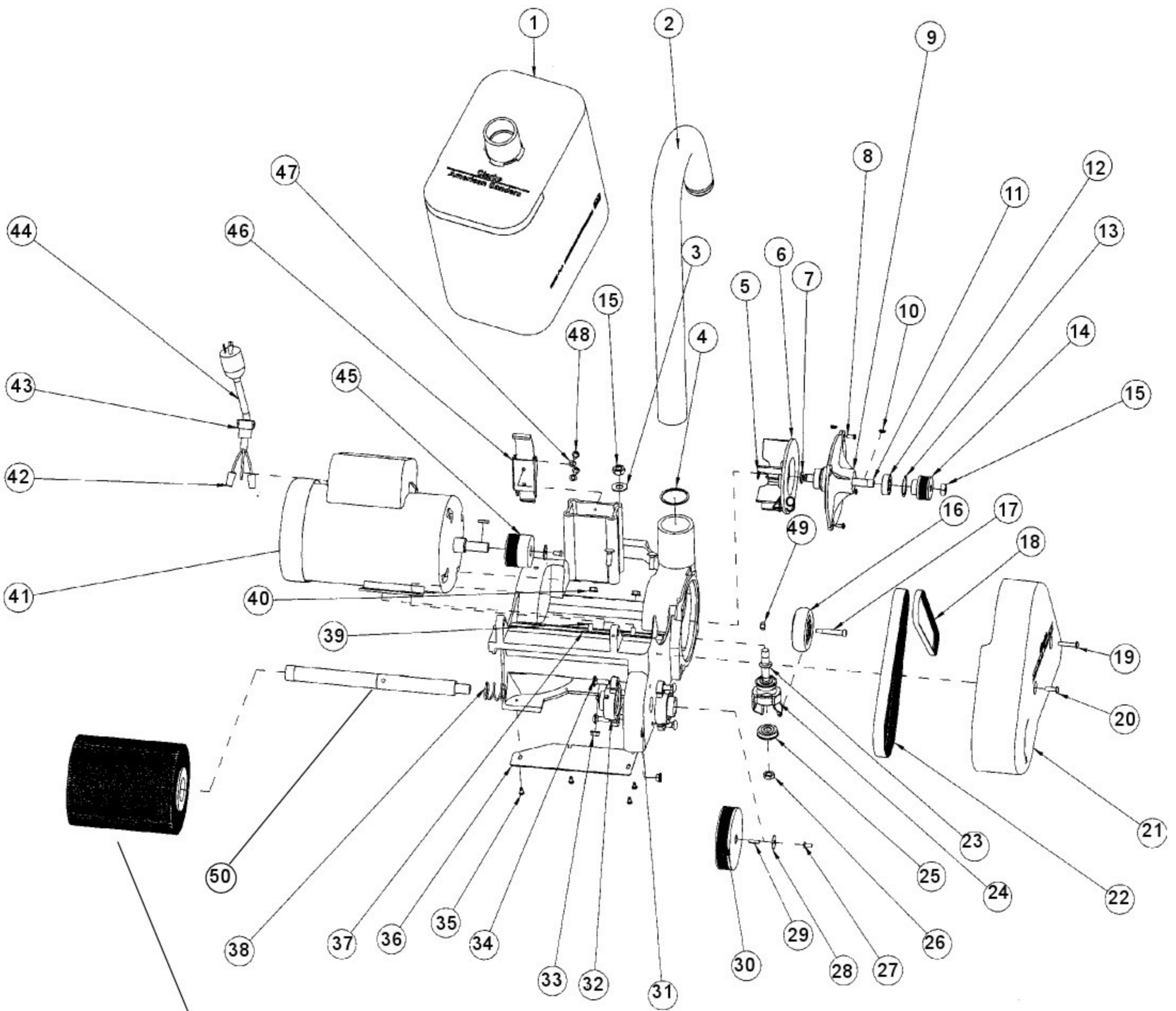


Wiring Diagram 3/08



Clarke® American Sanders®

FA-8
Assembly Drawing #1 3/08



ABRASIVE		
Part No.	Grade	Description
30808A	Coarse	1 ⁵ / ₈ Trim Brown
38732A	Medium	1 ⁵ / ₈ Trim Black
30809A	Fine	1 ⁵ / ₈ Trim Gray

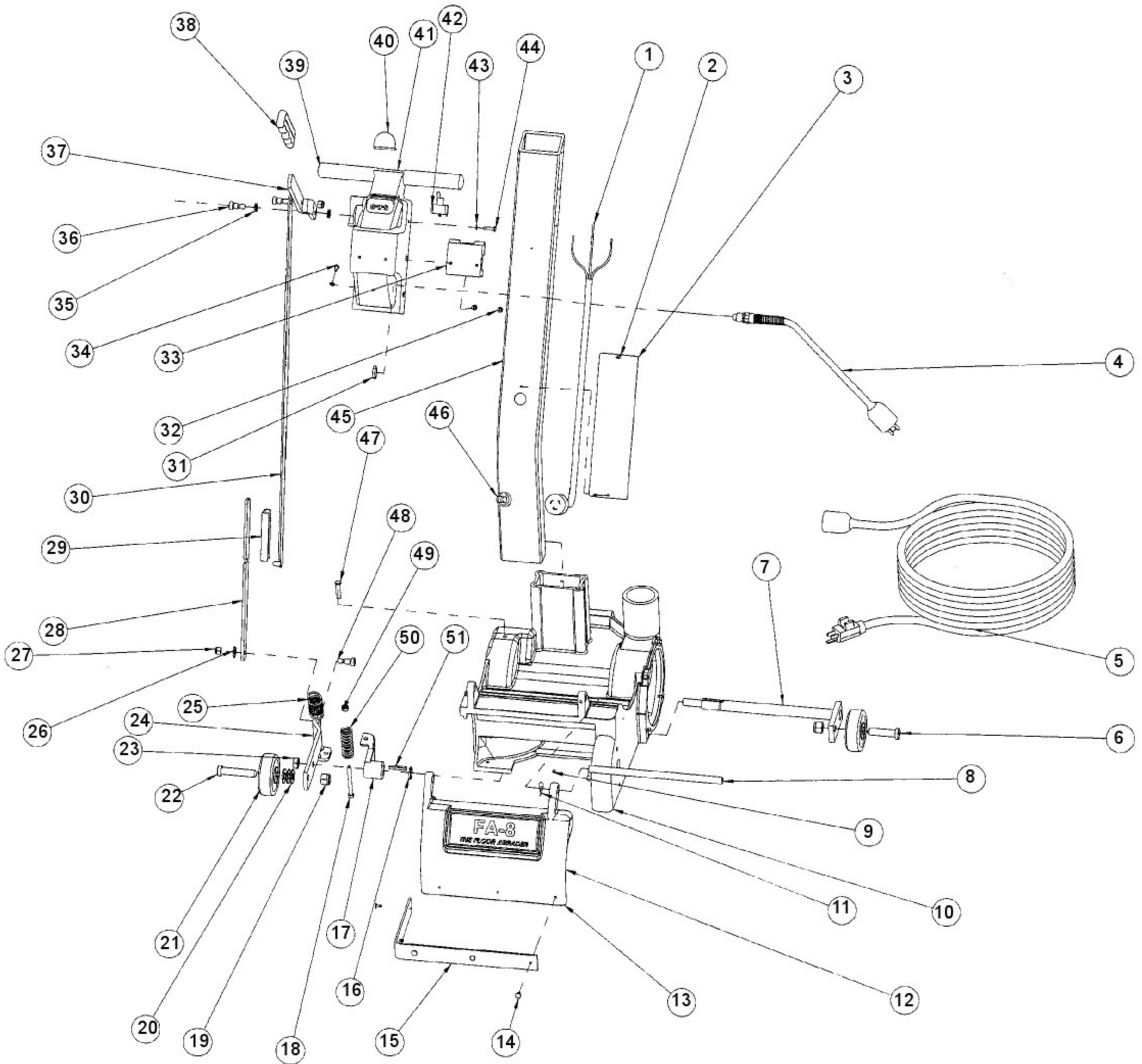
Clarke® American Sanders®

FA-8 Assembly Drawing #1 3/08

Ref. #	Part No.	Description	Qty
1	53741A	Bag, Dust	1
2	61897A	Dust Tube	1
3	980648	Washer, 17/32 x 1 1/16 Plain	4
4	68285A	Support , Tube	1
5	877307	Ring, Retaining	1
6	65005A	Impeller	1
7	980645	Washer, 3/8" S.A.E. Flat	2
8	962798	Screw, 10-24 x 1/2 P.H.	3
9	22122A	Cover, Fan	1
10	915561	Key, 1/8 x 1/2	2
11	67457A	Shaft, Fan	1
12	902567	Bearing	2
13	167312	Ring, Retainer Internal	1
14	54439A	Pulley, 1.625 x 1.281 22MM	1
15	920196	Nut, 1/2-13 Hex Jam	3
16	59960A	Wheel, Caster	1
17	80028A	Bolt, Shoulder 5/16 x 1.50	1
18	54450A	Poly V-Belt PJ512 4 Rib	1
19	962988	Screw, 1/4-20 x 1 1/4 PH	1
20	962892	Screw, 1/4-20 x 3/4 PH	1
21	299184	Belt Guard	1
22	54449A	Poly V-Belt PJ682 8 Rib	1
23	67468A	Shaft, Caster	1
24	29405A	Yoke, Caster	1
25	51194B	Bearing, Flanged	2
26	920196	Nut, 7/16-14 Hex Jam	1
27	87700A	Screw, 1/4-20 x 1/2	2
28	87039A	Washer, Fender 1/4"	2
29	915082	Key, 3/16 Sq. x 3/4"	1
30	54442A	Pulley, 4.25 x 1.00 22MMJ	1
31	25903A	Mainframe	1
32	51178B	Bearing, Flange 1" 2Hole	2
33	81211A	Nut, 5/16-18 Hex	6
34	80027A	Bolt, Rd Hd Sq Neck 5/16x1	6
35	80373A	Rivet, 15/32 x 5/16	2
36	67612A	Dust Shoe	1
37	61807A	Shield, Guard	1
38	54451A	Spring 1.15 x 1.281	1
39	68015A	Stud, 5/16-18 x 5/16-24 x 1.25	2
40	81208A	Nut, 5/16-24 Hex Ser. Flange	2
41	40967A	Motor, 5/8 Hp 115V 4 Pole	1
42	170667	Wire Connector Twist On	2
43	170637	Conduit Connector 3/8 x 1/2 NPT	1
44	41949A	Cord, Motor	1
45	54441A	Pulley, 2.219x1.594 22MM J	1
46	55711A	Latch, Draw	1
47	980657	Washer, Lock 1/4	2
48	962983	Screw, 1/4-20 x 3/8 PHCR	2
49	81217A	Nut, 1/4-20 Hex ES Std.	2
50	61927A	Shaft	1
NI	41304A	Capacitor 60 MFD	1
NI		Capacitor	
NI	40545A	Motor, Fan	1

Clarke® American Sanders®

FA-8
Assembly Drawing #2 3/08



Clarke® American Sanders®

FA-8

Assembly Parts List #2 3/08

Ref. #	Part No.	Description	Qty
1	41948A	Cord Interconnect	1
2	930093	Rivet, Pop $1/8 \times 1/4-5/16$	2
3	74052A	Plate, Warning	1
4	40541A	Cord Adapter	1
5	42234A	Cordset 14-3 x 50' SO	1
6	86113A	Screw, $1/2-13 \times 2.00$ LH SC	1
7	60166A	Axle, Truck	1
8	64469A	Handle, Lifting	1
9	962170	Screw, $10-24 \times 1/4$ HRSS	1
10	25903A	Mainframe	1
11	80295A	Washer, Bowed	1
12	71291A	Nameplate FA-8	1
13	22123A	Cover, Front	1
14	80373A	Rivet, $5/32 \times 5/16$ Grip	5
15	39883A	Bumper, 1.25×16.25 Felt	1
16	57423A	Retaining Ring, Ext. SH	1
17	60434B	Arm, Truck Level	1
18	85835A	Screw, $1/4-20 \times 2.50$ HHMS	1
19	920365	Nut, $1/2-13$ Nylock	2
20	980648	Washer, $17/32 \times 1 1/16$ Plain	4
21	59954A	Wheel, Truck	2
22	86114A	Screw, $1/2-13 \times 2.50$ LH SC	1
23	920196	Nut, $1/2-13$ Hex Jam	3
24	60435A	Arm, Truck Lift	1
25	58699A	Spring, Tension Drum Pres.	1
26	980645	Washer, $3/8"$ S.A.E. Flat	2
27	920110	Nut, $5/16-18$ Hex Lock	2
28	65707A	Link, Control Adjuster	1
29	61659A	Collar, Control Link	1
30	65706A	Link, Control	1
31	81210A	Locknut, $3/8$ Conduit	1
32	962666	Screw, $10-24 \times 5/8$ PHCR	2
33	41807A	Contact DPST 115V Coil	1
34	962798	Screw, $10-24 \times 3/8$ PHCR	5
35	980022	Washer, Wave	2
36	960952	Bolt, Shoulder $3/8 \times 3/8$	2
37	65618A	Lever, Control	1
38	34609A	Grip, Control Lever	1
39	34610A	Grip, $7/8$ Handle	2
40	63928A	Guard, Switch	1
41	24525A	Control Housing	1
42	47320A	Switch, Toggle	1
43	980603	Washer, #10 Lock Ext. Tooth	2
44	962666	Screw, $10-24 \times 3/4$ PHCR	6
45	69106A	Tube, Handle	1
46	51523A	Strain Relief, Bushing $7/8 \times .20$	1
47	80350A	Clevis Pin $.312 \times .125$	1
48	80026A	Bolt, Shoulder $3/8 \times 1/2$	1
49	81217A	Nut, $1/4-20$ Hex Elas. Stop	2
50	58698A	Spring, Comp. Truck Level	1
51	915082	Key, $3/16$ Sq. x 1.25"	1