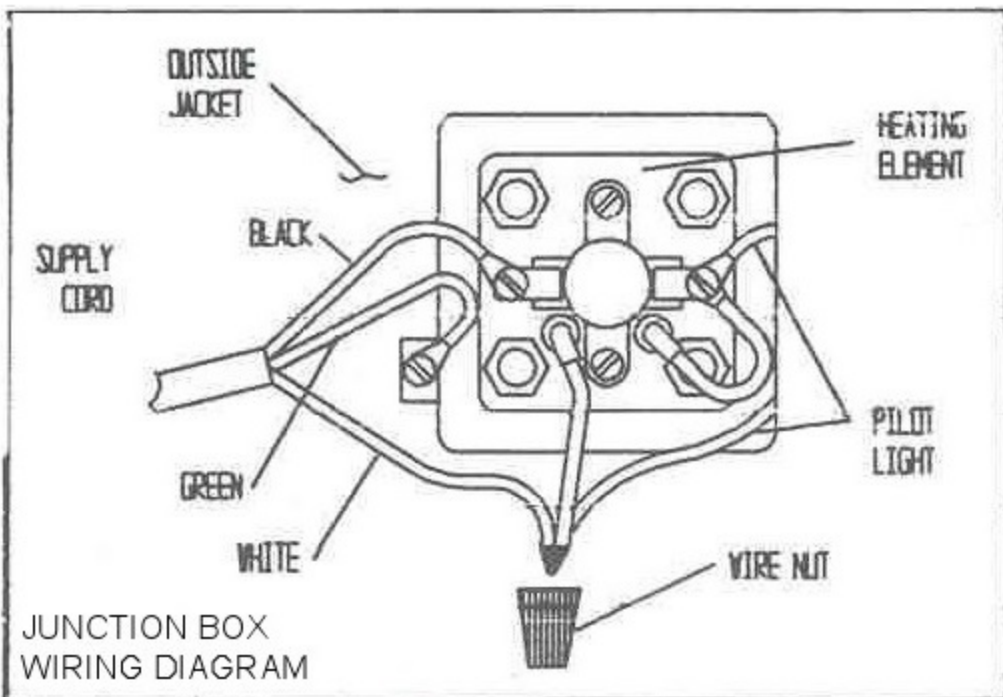
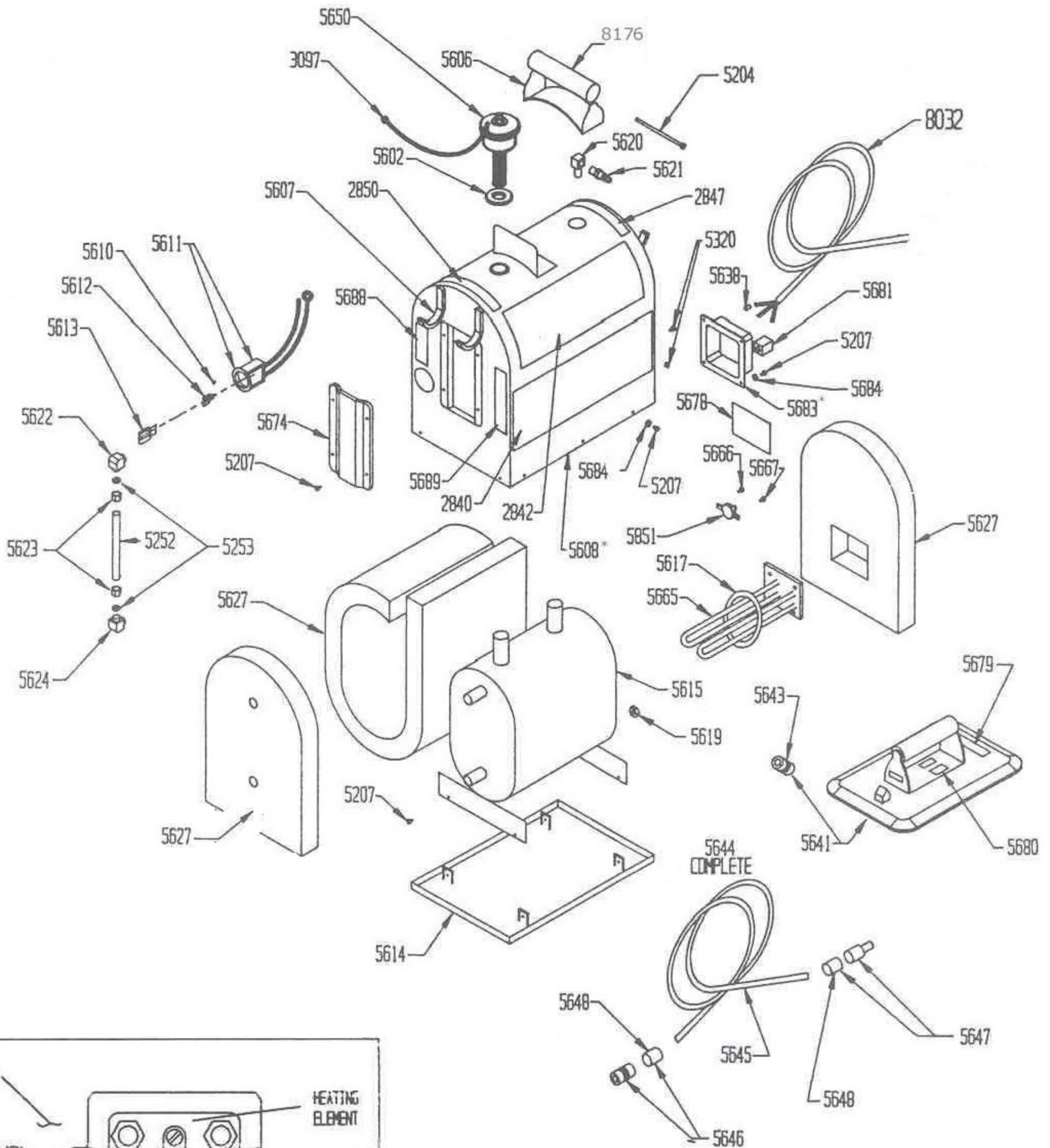




WARNING: Handling the cord on this product will expose you to lead, a chemical known to the State of California as a risk to cause cancer, birth defects or other reproductive harm. Wash hands after handling.

MODEL 5687 PARTS LIST



****NOTE:** AT LEAST 1 SCREW ON JUNCTION BOX COVER (#5683) & 1 ON JACKET (#5608) MUST CONTAIN PAINT CUTTING WASHER FOR PROPER GROUNDING**

PART NO.	REPLACEMENT PART DESCRIPTION
2842	"CAUTION" Decal for Jacket (2 required) (replaces 5677)
2843	Operating Guide
2847	"ELECTRICAL HAZARD" . . . Decal
2850	"HAND" - "STEAM BURNS" Decal
3097	Lanyard - 12" Cable Connecting weight Cap to Steamer
3673	"UNPLUG BEFORE FILLING" Decal
3676	"WATER LEVEL" Decal
3719	"AVOID SCALDING" Warner Decal on Concentrator (1 required)
3722	"HOT" Decal on Concentrator (4 required on Concentrator) - (2 required on Weight Cap)
3755	Rental Window Banner
8176	Handle (1 required)
5207	Sheet Metal Screw, #8 x 3/8" Phillips Head (38 required)
5252	Gauge Glass with Gaskets, 3/8" x 5 1/2"
5253	Gasket for Water Glass (2 required)
5320	Ground Terminal Screw with Nut (3/16" x 3/8" Stove Bolt)
5500	Decal Kit, (2 ea. #2840, 2 ea. #2842, 1 ea. #2847, 1 ea. #2850, 1 ea. #3673, 1 ea. #3676, 1 ea. #3722, 1 ea. 3719)
5512	Rental Blanks
5602	Gasket for #5601 (weight Cap Discontinued)
5606	Bracket for Carrying Handle
5607	Accessory Hooks
5608	Orange Jacket with Decals and Steam Shield
5610	Screw, #2 x 3/16" Self Tapping (2 required)
5611	Pilot Light Socket with Cup & Wires plus 2 #5610 Mounting Screws
5612	Pilot Light Bulb (65VAC, 90VDC, .3MA)
5613	Red Cap for Pilot Light
5614	Bottom Tray with Tank Mounting Brackets
5615	Water Tank (Stainless Steel), (holds 1-1/2 gallons water, runs 1-1/2 hours on 1 tank)
5617	Gasket for Heating Element
5619	Brass Nut, 3/8" x 16" (4 required to attach Element to Tank)
5620	Elbow, Steam Outlet, Weatherhead 3400 x 4, Brass
5621	Hose Connection, Steam Outlet, Tru Flate H2C or Foster #10-3
5622	Elbow, Upper Water Gauge (drilled out) with nut
5623	Nut for Water Gauge Elbows (2 required)
5624	Elbow, Lower Water Gauge (not drilled out) with Nut
5627	Insulation, Steamer Tank, 3 Piece Set
5629	Steam Pan, Thin Line 2 1/2" x 14", Complete with Connectors
5638	Wire Nut for Supply Cord - Thermal Switch Lead Connection
5641	Steam Pan Standard, 7 7/8" x 11 3/4" Complete
5643	Hose Connector on Steam Pan, Tru Flate 23S or Foster 3003
5644	Steam Hose, Complete with Connectors
5645	Steam Hose, without Connectors
5646	Hose Connector with Clamp, Tank end of Hose Tru Flate 20-5BS or Foster 3703
5647	Hose Connector with Clamp, Pan end of Hose Tru Flate H9C of Foster 17-3
5648	Hose Clamp, 3/8" Hose (2 required)
5650	Weight Cap for model #5687 only
5665	Electric Heating Element with Thermostat, Mounting Screws, Terminal Screws & Gasket and #5668 Red Jumper Wire with insulating sleeve, #5669 White Jumper Wire with Insulating Sleeve, and #5670 Insulating Sleeve
5667	Terminal Screws, #8-32 x 3/16" Pan Head (2 required)
5674	Plastic Water Gauge Shield
5679	"AVOID SCALDING" Decal
5681	Grommet for Electric Cord
5683	Cover Plate to Junction Box
5684	Screw and Lock Washer, (2 required)
5851	Thermostat
8032	Electric Cord (15' x 14/3 SJ) with GFCI, (replaces #3099 & 5083)

THIS MACHINE SHOULD BE MAINTAINED IN PROPER OPERATING CONDITION AT ALL TIMES. THIS INCLUDES THE FOLLOWING:

- The steamer water tank should be cleaned out after each use ... a dirty tank can cause geysering, foaming or boiling over. **The water tank is 1 1/2 gallons.**
- Do not use any chemicals in water.** Always use clean, unsoftened water when available, and a clean pail for filling the water tank. Natural water rarely has enough mineral content to cause trouble, but in some softening processes the water is treated with additional chemicals which will cause foaming after a period of time.
Dirty water or water with a high mineral content foams up like milk when it is heated. In a wallpaper steamer, this bubbling water will carry over into the hose and come out through the steam pan.
- The steamer runs approximately 1 1/2 hours on one tank of water. Only the water evaporates, any minerals or chemicals that may be dissolved in it remain in the water tank. For this reason, the water tank should be emptied after each job.
- If foaming does occur, the only way it can be overcome is to clean out the water tank. In some cases, repeated rinsings with boiling water is sufficient. If this does not stop the foaming, add light distilled vinegar to the water. some cases are very stubborn and cannot be overcome, the only solution is to replace the tank with a new one.
- Maintain all decals in good readable condition, for replacement decals see the parts list for the correct decal number.
- If rubber gasket on weight cap is hard, cracked, or there is a build up of mineral contents, try cleaning by scraping build up off, or replace it.
- Be sure steamer hose and electrical cord are maintained in good condition. Inspect all electrical components and connections regularly, replace when worn or damaged. Be sure steamer hose, fittings and steamer concentrator pan are not plugged.

For more information or replacement parts call our Customer Service Wats Number: **Phone: 800-444-0606 Fax: 800-455-9883**

For any problem that requires disassembly, the steamer should be returned to: Warner Manufacturing Company 13540-600 Watertower Circle, Minneapolis, MN 55441