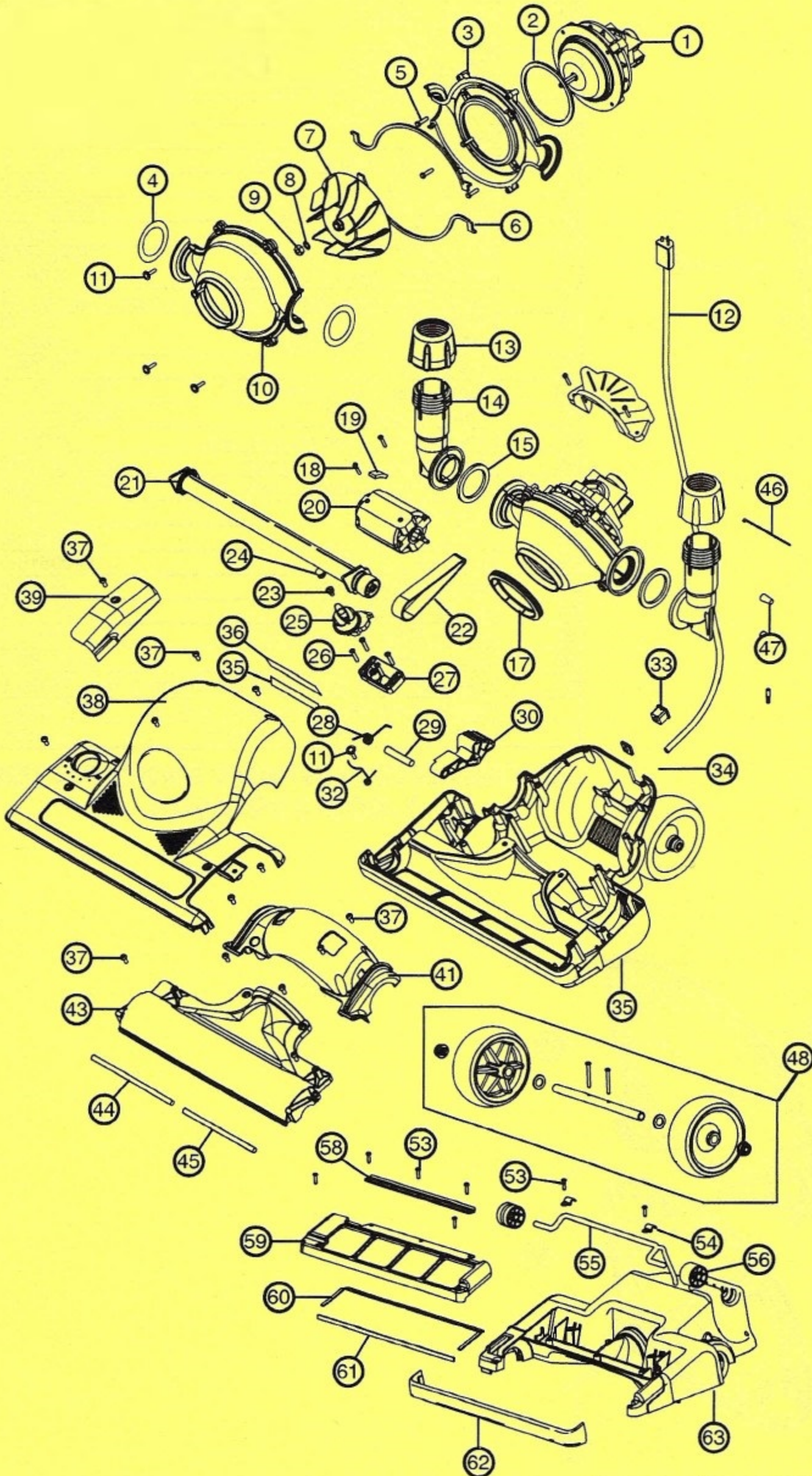


DUAL STACK[®] COMMERCIAL LOWER UNIT PARTS DIAGRAM

This diagram is only a representation of the unit. Component configuration on exploded view may differ in case of specific versions. However, the actual components are distinguished by means of part number. Please consult your Authorized Oreck representative and they will order the correct and most up-to-date components for your needs.



Item #	Part Description	Part #
1	Fan Motor	09-78036-02
2	Motor Cap Gasket	78000-01
3	Rear Scroll Housing - Order #6 (qty 2) also	78017-01-0327
4	Scroll Liner Ring	78107-01
5	Screw, #8 -16 X .750	03754
6	Scroll Inner Gasket	78006-01
7	Fan Kit	78004-02-0000
8	External Tooth Lock Washer	03-00480-01
9	Nut, .250 X 32 Left Hand	03-00448-01
10	Forward Scroll Housing - Order #4 also	78016-01-0327
11	Screw w/Washer #8	03-00451-01
12	Harness, 3-Conductor w/Terminal	78038-01-0327
13	Pivot Collar	78018-01-0327
14	Pivot Assembly - Order #15 also	78019-02-0327
15	Pivot Gasket	78011-01
17	Scroll Outer Gasket	78007-01-0327
18	Screw, #6 X .88"	03729
19	Gasket, 1.0 X .5 X 1.88	78084-01
20	Roller Brush Motor	09-78005-01
21	Brush Roll Assembly	78029-01
22	Brush Belt	75024-01
23	CHA Shoulder Bolt Screw	03-00508-01
24	Glamour Cap	78109-01
25	CHA Knob	78100-01-0327
26	Screw, #8 X 1.0 PLT 30 FL. HD	03-00518-01
27	Detent Cap Assembly	09-78099-51
28	Detent Spring	03-00506-01
29	Detent Axle	03-00505-01
30	Detent Pedal	78093-01-0327
32	CHA Spring	03-00515-02
33	2-Part Data Label	NA
34	Kit, Plug & Square Strain Relief	78131-01
35	Base Assembly	NA
36	Servicing Label	78103-01
37	Screw, #10 -24 X .50 Machine	03-00519-02
38	Top Cover Assembly w/Labels	09-78074-01
39	Belt Door	78075-01-0384
41	Cover, Inner-Base, Rear, 16" Nozzle	78072-01-0384
43	Front Inner-Cover Assembly - Order #44 & #45 also	09-78098-51
44	Gasket, Inner-Base Cover, Front Left	78055-01
45	Gasket, Inner-Base Cover, Front Right	78056-01
46	Cable Tie	03-00404-01
47	Wire Nut	03-00444-01
48	Rear Wheel Assembly	09-78113-51
53	Screw, #6 - 11 X 9 / 16"	03-00413-23
54	Axle Clamp	03-00510-01
55	CHA Axle	03-00509-01
56	Front Wheel	78101-01-0327
58	Micro Sweep Blade	78076-01
59	Skid Plate, 16" Nozzle - Order #60 & #61 also	78037-01
60	Gasket, 1.75 X .25 X .0625	78096-01
61	Gasket, 13.25 X .25 X .0625	78089-01
62	Bumper 16" Nozzle	78034-01-436
63	Baseplate Assembly, 16"	09-78097-01

- Replacement of components should only be done by an experienced technician or an authorized ORECK service center.
- Unplug unit before servicing.

When ordering parts, please have your **MODEL number** and **TYPE number** available. This information is located on the back of the unit housing. These two bits of information will assure the proper parts will be ordered.

WARNING - AVERTISSEMENT
 TO REDUCE RISK OF ELECTRICAL SHOCK,
 DO NOT USE OUTDOORS OR ON WET SURFACES.
 POUR REDUIRE LES RISQUES DE CHOC
 ELECTRIQUE NE PAS UTILISER A L'EXTERIEUR
 ET NE PAS ASPIRER DE MATIERES HUMIDES

SN1600RYXA000000-1

TYPE 1
 MODEL
 DS1600HY

120 VOLTS 60 HZ 5.0 AMP

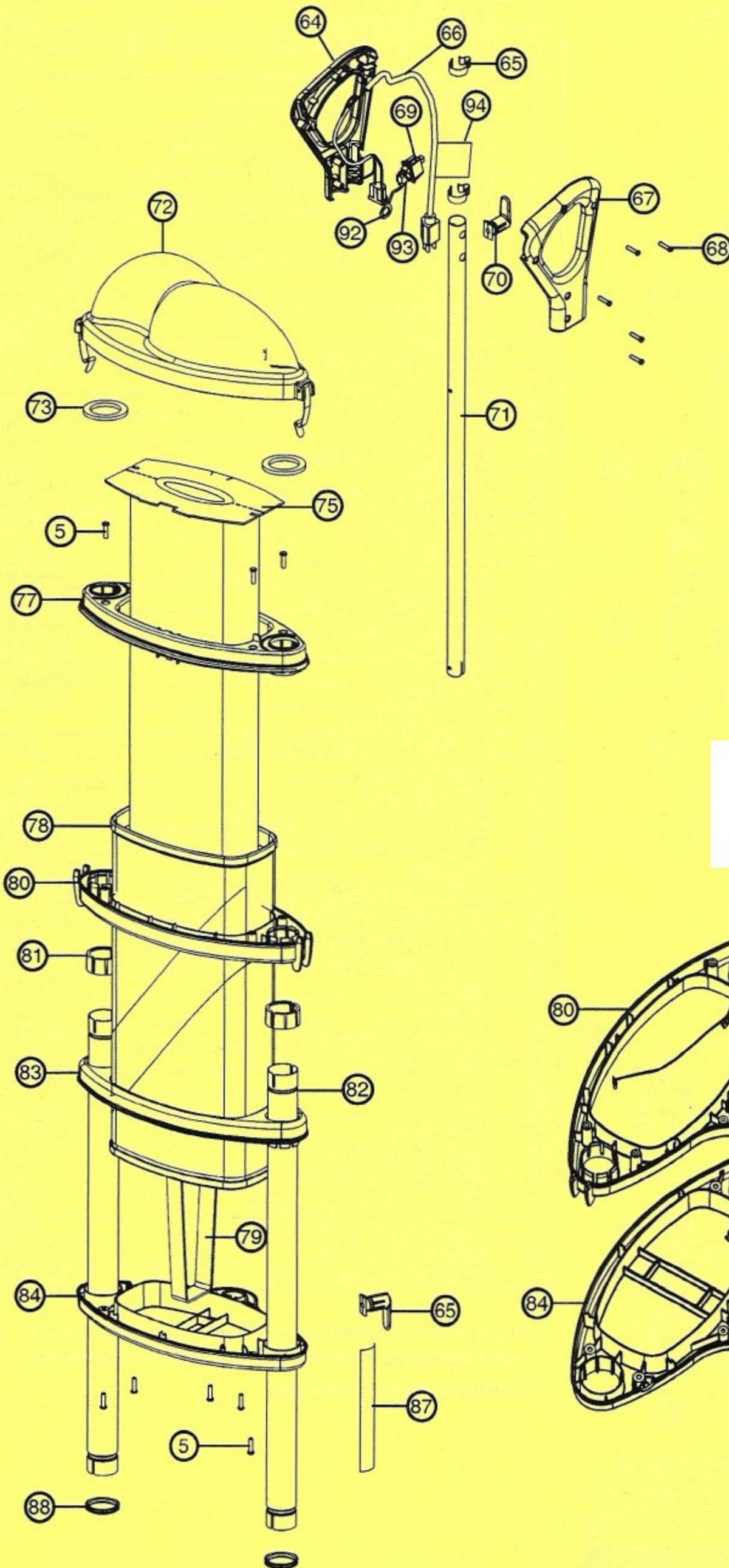
ORECK[®] XL LISTED
 NEW ORLEANS, LA 70123 U.S.A.

E5721
 296B

ORECK

DUAL STACK[®] COMMERCIAL UPPER UNIT PARTS DIAGRAM

This diagram is only a representation of the unit. Component configuration on exploded view may differ in case of specific versions. However, the actual components are distinguished by means of part number. Please consult your Authorized Oreck representative and they will order the correct and most up-to-date components for your needs.



Item #	Part Description	Part #
64	Handle, Right w/Overmold	78062-01-0384
65	Cord Clamp	03-00499-01
66	Cord, 3-Conductor	78012-01-0327
67	Handle, Left w/Overmold	78063-01-0384
68	Screw, #8 X .750	03-00456-01
69	Switch	75110-02
70	Cord Dump Assembly, Post	09-78041-01
71	Handle Pipe	78028-01
72	Plenum Latch Assembly	09-78071-51
73	Gasket, Tube / Plenum	78033-01
75	DS1600HY: Inner Filter Bag DS1600RY: Inner Filter Bag	DSPK25DW DSPK25
77	Clamp-Pipe, Top, Upper, Red-Order #73 also	78022-01-441
78	DS1600HY: Outer Bag DS1600RY: Outer Bag	78027-01 78027-02
79	Poof Limiter	78106-01
80	Clamp-Pipe, Top, Lower - Red	78023-01-441
81	Exhaust Tube Seal	78095-01-0327
82	Exhaust Pipe - Order #88 (1 per) also	78030-01
83	Clamp, Pipe, Bottom, Upper	78024-01-0384
84	Clamp, Pipe, Bottom, Lower	78025-01-0384
87	Tube Label	78090-01
88	O-ring, C Shape	78102-01
89	Nut Plate, #8 - 32	03-00516-01
90	Jumper Wire Ground	78110-01
91	#8 - 32 X 1.825 Screw	03-00517-01
92	Jumper Wire Ground w/ring	78111-01
93	Quick Connect	03-00580-01
94	Extension Cord Specification & Warning Tag	78085-02
	Handle Assembly Includes #64-71, 92-94, 99	09-78035-51
	Collar Tool (Optional Accessory)	78128-01

DELTAQUIP
www.deltaquip.ca (604) 298-8996 SUPPLIES LTD.

ORECK