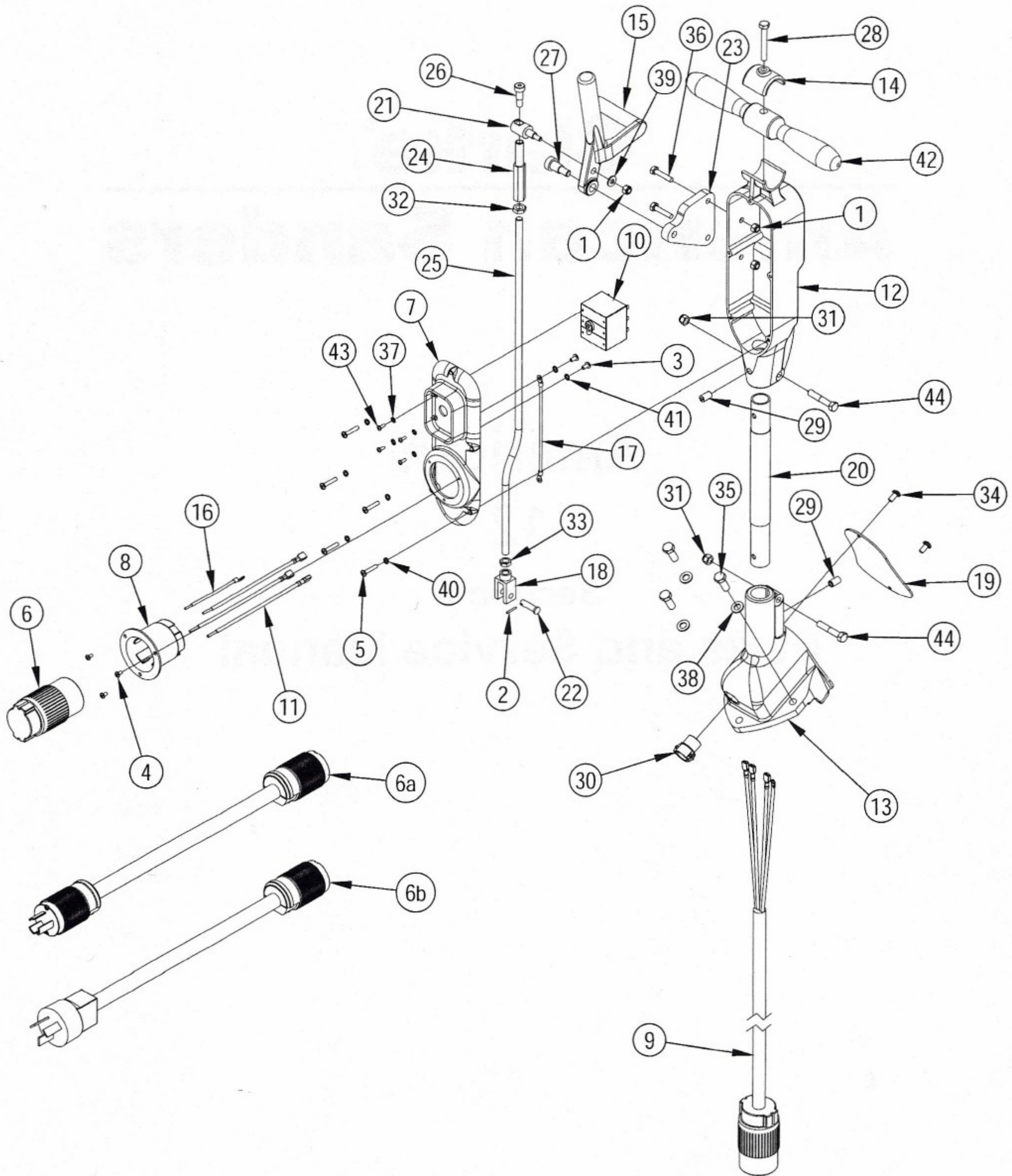

Clarke[®]
American Sanders

American
12
Section II
Parts and Service Manual

(78150D)

HANDLE ASSY [MODELS 07001A, 07044C, 07108A, 07049C, 07109A]

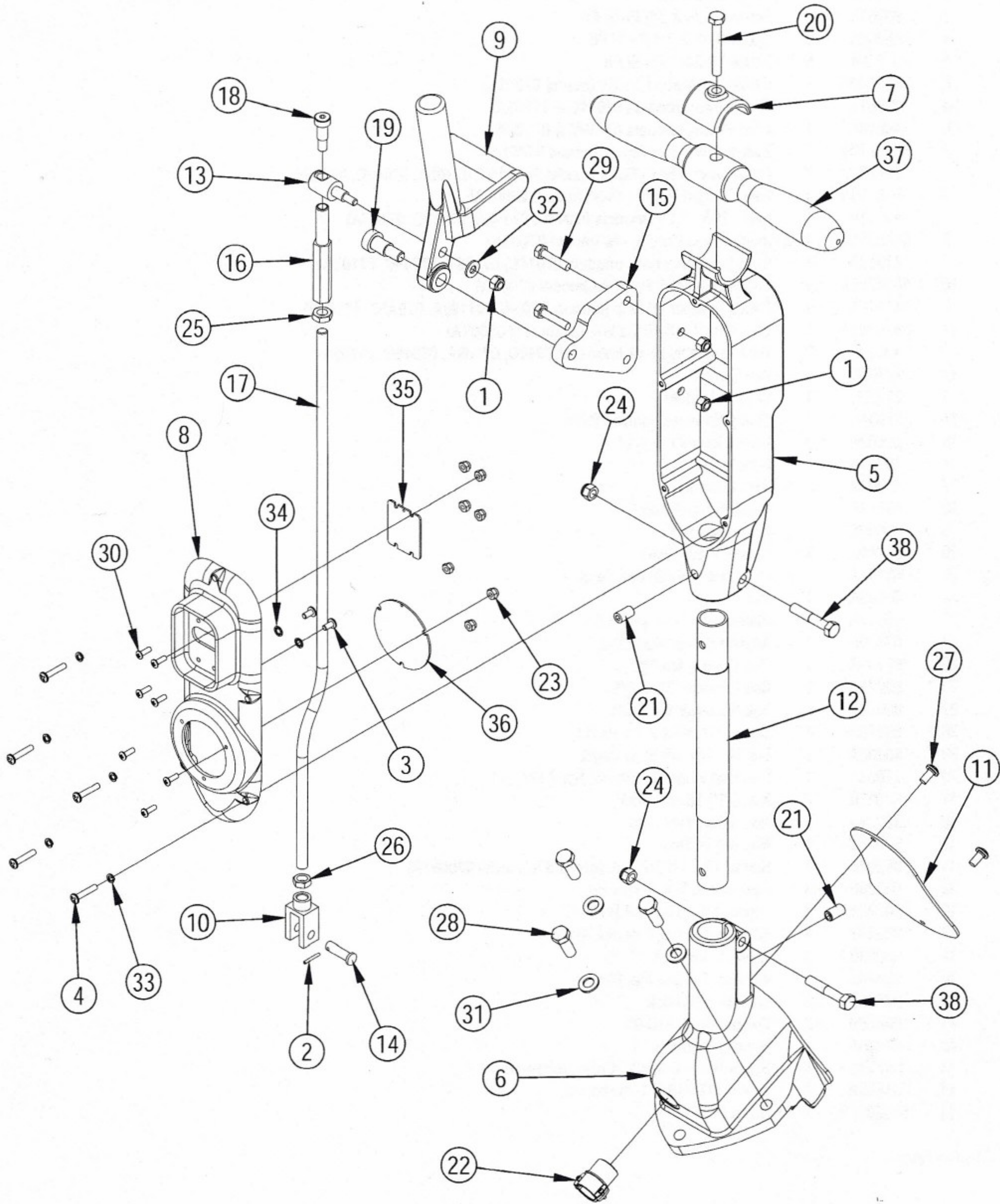


HANDLE ASSY [MODELS 07001A, 07044C, 07108A, 07049C, 07109A]

Item	Ref. No.	Qty	Description
1	920284	3	Nut Stop Elastic 1/4-20 Heavy
2	925036	1	Pin-3/32x3/4 Cotter
3	962015	2	Screw 10-24 X 3/8 Pn St Ph
4	962065	3	Screw 8-32 X 1/4 Pn St Ph
5	962794	5	Screw 10-24x1 Pn St Ph
6	56381401	1	Connector Nema L15-30r (model 07001A)
6a	42201A	1	Cord-Power (models 07044C & 07108A)
6b	40010A	1	Cord-Power (models 07049C & 07109A)
7	56381704	1	Switch Box Cover Am-12 (model 07001A)
	22127C	1	Cover Switch Box - Black (models 07044C, 07108A, 07049C, 07109A)
8	56382556	1	Inlet Flanged Nema L15-30 (model 07001A)
	43501A	1	Inlet - 20A, 250V (models 07044C, 07108A, 07049C, 07109A)
9	56382558	1	Interconnect Cord 3p-4w (model 07001A)
	41917A	1	Cord-Interconnecting (models 07044C, 07108A, 07049C, 07109A)
10	56382559	1	Circuit Breaker 3 Pole 24a (model 07001A)
	41411A	1	Circuit Breaker 30 Amp (models 07044C, 07108A, 07049C, 07109A)
11	56382832	3	Wire Asm 7.5 X 10 Ga W/Fifqd (model 07001A)
	49023A	2	Wire Assembly Black (models 07044C, 07108A, 07049C, 07109A)
12	20704C	1	Box-Switch
13	21102C	1	Bracket-Handle
14	21904C	1	Clamp Steering Handle - Black
15	25602A	1	Lever Control Am-8/12
16	48900A	1	Wire Assy
17	48901A	1	Wire Assembly
18	53917B	1	Clevis Control Rod
19	62609A	1	Cover-Brkt Hdl
20	66114C	1	Handle Pipe - Black
21	66151A	1	Pivotcontrol Rod8 Belt Sand
22	66503A	1	Pin
23	66694A	1	Platecontrol Leverpntd8 Be
24	67129A	1	Adjustercontrol Rod8 Belt S
25	67144A	1	Rod Control Am-12
26	80021A	1	Bolt Shoulder 3/8 X 5/8
27	80022A	1	Bolt Shoulder 1/2 X 5/8
28	85818A	1	Screw5/16-18 X 2 1/2 Hx Hd
29	86200A	2	Scr 3/8 -16x 5/8 St St Dogpt
30	170637	1	Conduit Connector 3/8x1/2 Npt 2 Scr
31	920110	2	Nut, 5/16-18 Hex Lock
32	920148	1	Nut, 3/8-16 Hex Jam
33	920260	1	Nut, 3/8-16 Hex
34	962016	2	Screw, 10-24 X 1/2" Rd. (qty of 3 in model 070001A)
35	962288	3	Bolt, 3/8-16 X 1.00 Hex Hd.
36	962481	2	Screw, 1/4-20 X 1 1/4 H.H.C.S.
37	980607	4	Washer, #6 Lock External Tooth
38	980638	3	Washer, 3/8 Lock
39	980646	1	Washer 1/4 Sae Flat Pltd
40	980650	5	Washer, #10 Lock
41	980699	2	Washer Sh #1210-00
42	64405A	1	Handle, Steering
43	85313C	4	Screw Phms 6-32x3/8 Cross Recessed
44	85816A	2	Screw, 5/16-18 X 1.75 Hex Hd
[]	56380639	1	Decal-Prop 65

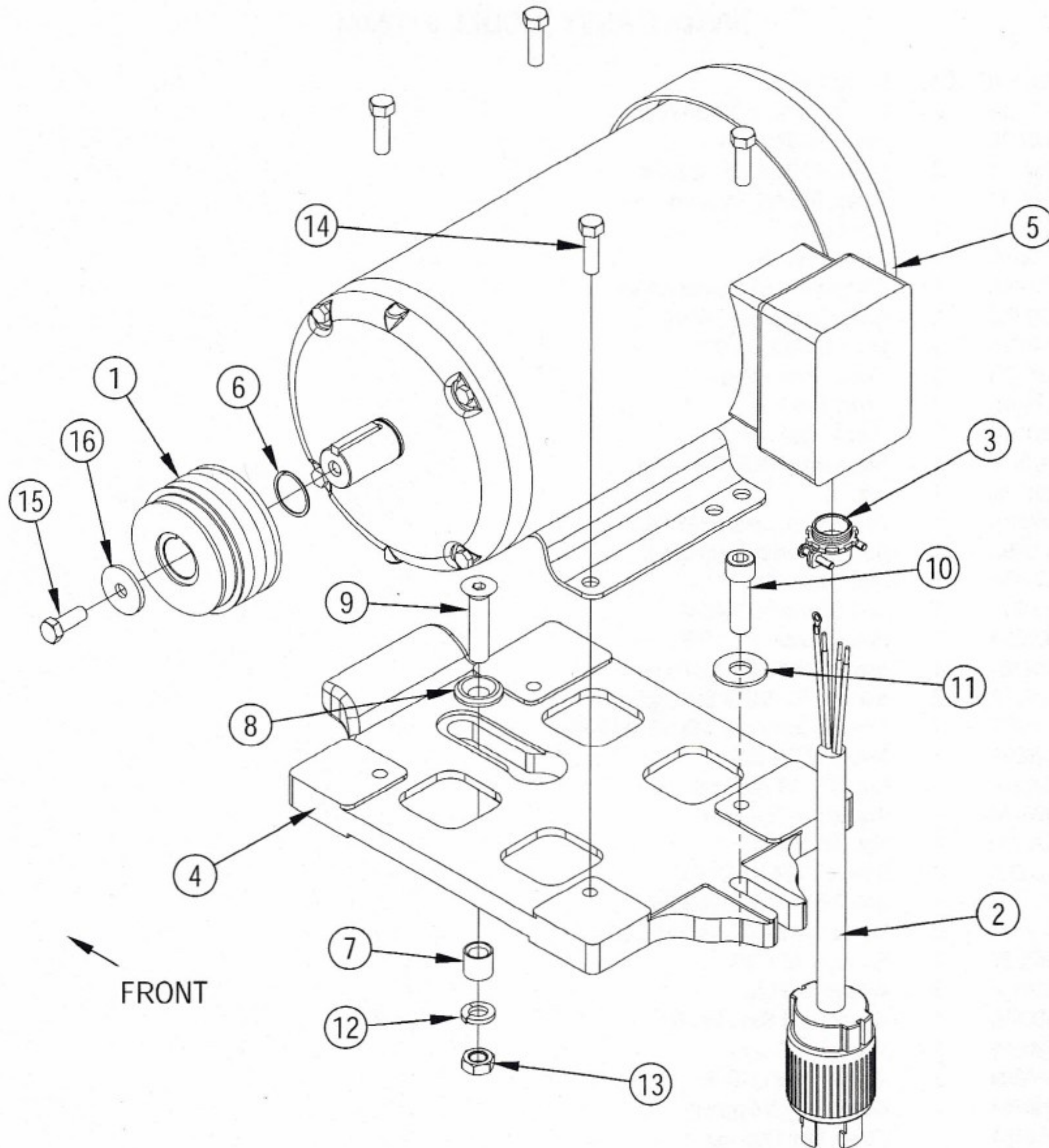
[] = Not Shown

HANDLE ASSY [MODEL 07120A]



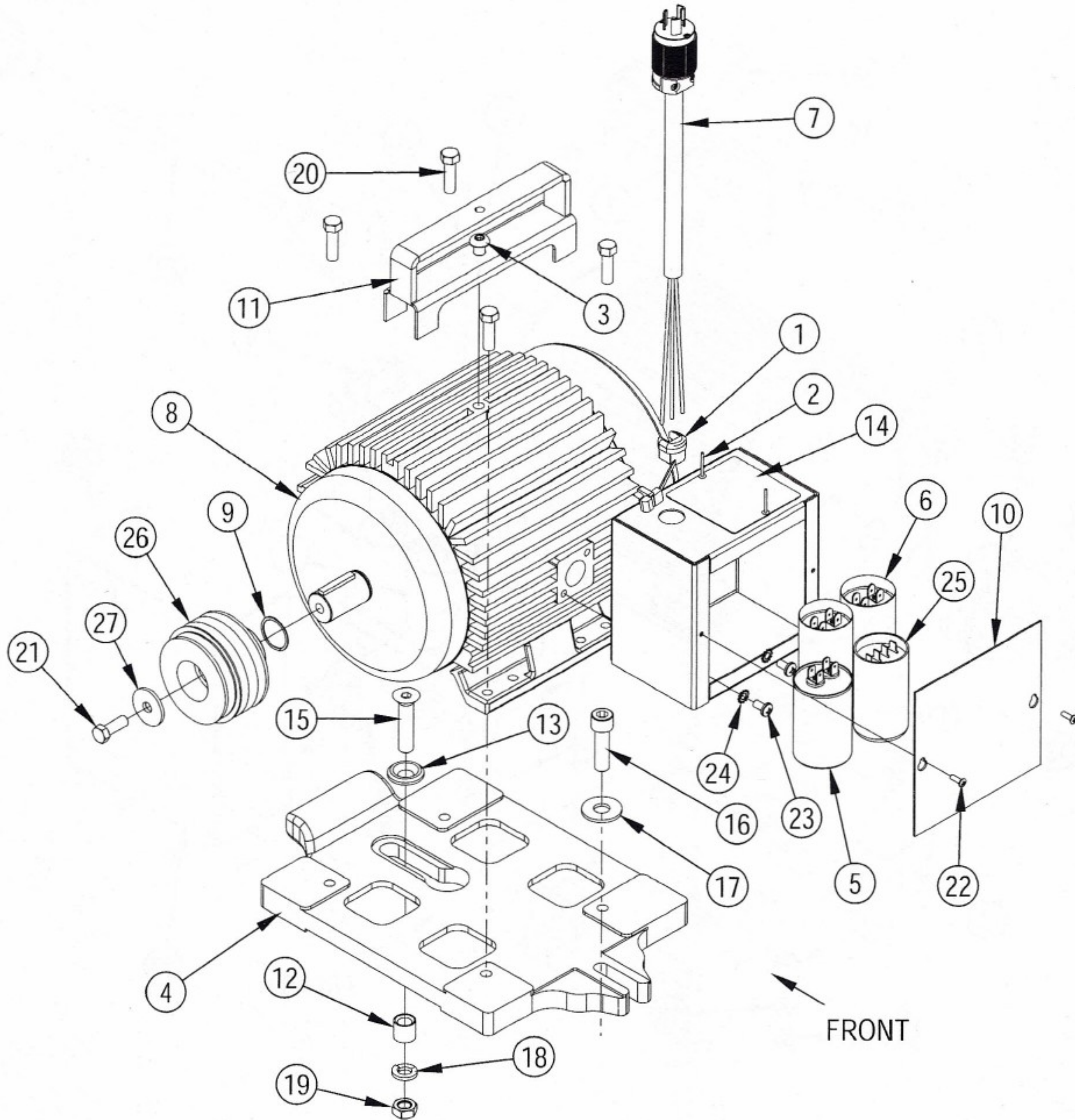
HANDLE ASSY [MODEL 07120A]

Item	Ref. No.	Qty	Description
1	920284	3	Nut Stop Elastic 1/4-20 Heavy
2	925036	1	Pin-3/32x3/4 Cotter
3	962015	2	Screw 10-24 X 3/8 Pn St Ph
4	962794	5	Screw 10-24x1 Pn St Ph
5	20704C	1	Box-Switch
6	21102C	1	Bracket-Handle
7	21904C	1	Clamp Steering Handle - Black
8	22127C	1	Cover Switch Box - Black
9	25602A	1	Lever Control Am-8/12
10	53917B	1	Clevis Control Rod
11	62609A	1	Cover-Brkt Hdl
12	66114C	1	Handle Pipe - Black
13	66151A	1	Pivotcontrol Rod8 Belt Sand
14	66503A	1	Pin
15	66694A	1	Platecontrol Leverpntd8 Be
16	67129A	1	Adjustercontrol Rod8 Belt S
17	67144A	1	Rod Control Am-12
18	80021A	1	Bolt Shoulder 3/8 X 5/8
19	80022A	1	Bolt Shoulder 1/2 X 5/8
20	85818A	1	Screw5/16-18 X 2 1/2 Hx Hd
21	86200A	2	Scr 3/8 -16x 5/8 St St Dogpt
22	170637	1	Conduit Connector 3/8x1/2 Npt 2 Scr
23	920065	7	Nut, 8-32 E.S.N.A
24	920110	2	Nut, 5/16-18 Hex Lock
25	920148	1	Nut, 3/8-16 Hex Jam
26	920260	1	Nut, 3/8-16 Hex
27	962016	2	Screw, 10-24 X 1/2" Rd.
28	962288	3	Bolt, 3/8-16 X 1.00 Hex Hd.
29	962481	2	Screw, 1/4-20 X 1 1/4 H.H.C.S.
30	962727	7	Screw, 8-32 X 1/2
31	980638	3	Washer, 3/8 Lock
32	980646	1	Washer 1/4 Sae Flat Pltd
33	980650	5	Washer, #10 Lock
34	980699	2	Washer Sh #1210-00
35	40674A	1	Cover, Switch Opening
36	40675A	1	Cover, Inlet Opening
37	64405A	1	Handle, Steering
38	85816A	2	Screw, 5/16-18 X 1.75 Hex Hd
[]	56380639	1	Decal-Prop 65



MOTOR ASSY [MODEL 07001A]

Item	Ref. No.	Qty	Description
1	56381703	1	Motor Pulley Am-12
2	56382557	1	Motor Cord 3p-4w
3	56382827	1	Cable Connector 3/4
4	26108C	1	Platform Motor - Black
5	41044A	1	Motor 10 3 230/460v
6	57712A	1	Ringretainingmotor Shaft8
7	67820A	1	Spacer-Screw-Motor
8	68704A	1	Washer-Screw-Motor
9	84220A	1	Screw 1/2-13 X 2 1/4 Flat Hd
10	85706A	1	Scr 1/2 -13x1&3/4 Hx St Cap
11	87006A	1	1/2 Uss Std Flat Washer Pltd
12	87101A	1	Washer Lock 1/2 Nom
13	920196	1	Nut 1/2-13 Hex Jam
14	962216	4	Screw, 3/8-16 X 1 1/4 Hex.
15	962288	1	Bolt, 3/8-16 X 1.00 Hex Hd.
16	87034A	1	Retainer, Motor Pulley



MOTOR ASSY [MODELS 07044C, 07108A, 07049C, 07109A]

Item	Ref. No.	Qty	Description	Item	Ref. No.	Qty	Description
1	697502	1	Strain Relief-Bushing Sr 8I-1	15	84220A	1	Screw 1/2-13 X 2 1/4 Flat Hd
2	930087	2	Rivet 1/8dia Usm Ad42bs	16	85706A	1	Scr 1/2 -13x1&3/4 Hx St Cap
3	962870	1	Scr 3/8 -16x1 Bt St Allen	17	87006A	1	1/2 Uss Std Flat Washer Pltd
4	26108C	1	Platform Motor - Black	18	87101A	1	Washer Lock 1/2 Nom
5	41304A	1	Capacitor Oil Filled 40mfd	19	920196	1	Nut 1/2-13 Hex Jam
6	41305A	2	Capacitor Electr 161-193mfd	20	962216	4	Screw, 3/8-16 X 1 1/4 Hex.
7	41945A	1	Cordmotorclassic 8	21	962288	1	Bolt, 3/8-16 X 1.00 Hex Hd.
8	44639A	1	Motor4 Hp 230/60classic 8 (models 07044C, 07108A)	22	962727	2	Screw, 8-32 X 1/2
	44640A	1	Motor3 Hp240 V / 50 Hzclass (models 07049C, 07109A)	23	962823	2	Screw, 1/4-20 X 1/2 P.H.
9	57712A	1	Ringretainingmotor Shaft8	24	980614	2	Washer, 1/4" Starlock, External
10	62904A	1	Enclosuremotor Startpntdcla	25	47378A	1	Switch Start 260v Cutout
11	64460A	1	Handle Wldmtmotor Liftpntd8	26	66164A	1	Pulley, Motor
12	67820A	1	Spacer-Screw-Motor	27	87034A	1	Retainer, Motor Pulley
13	68704A	1	Washer-Screw-Motor				
14	74044A	1	Platedangerfireclassic 8				