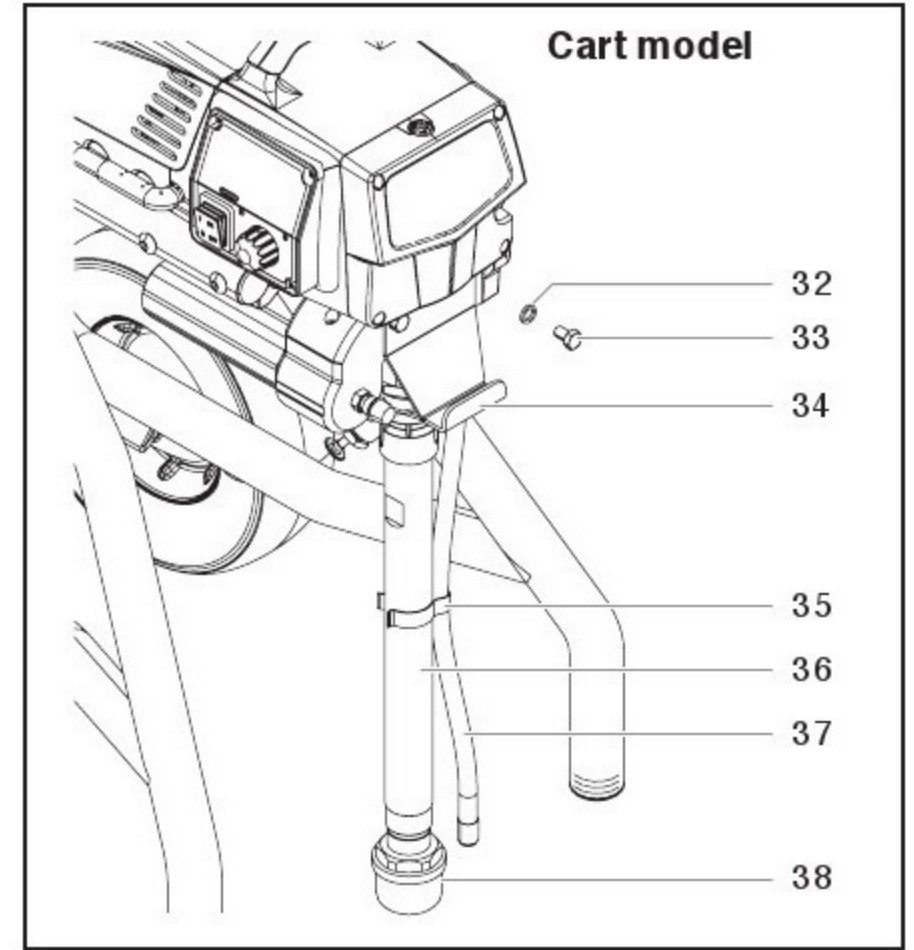
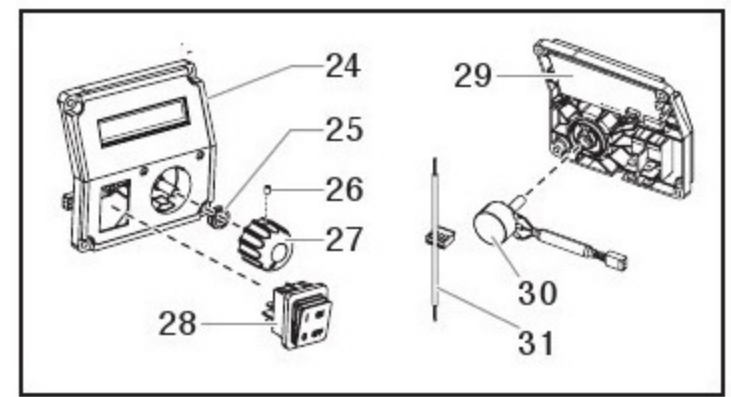
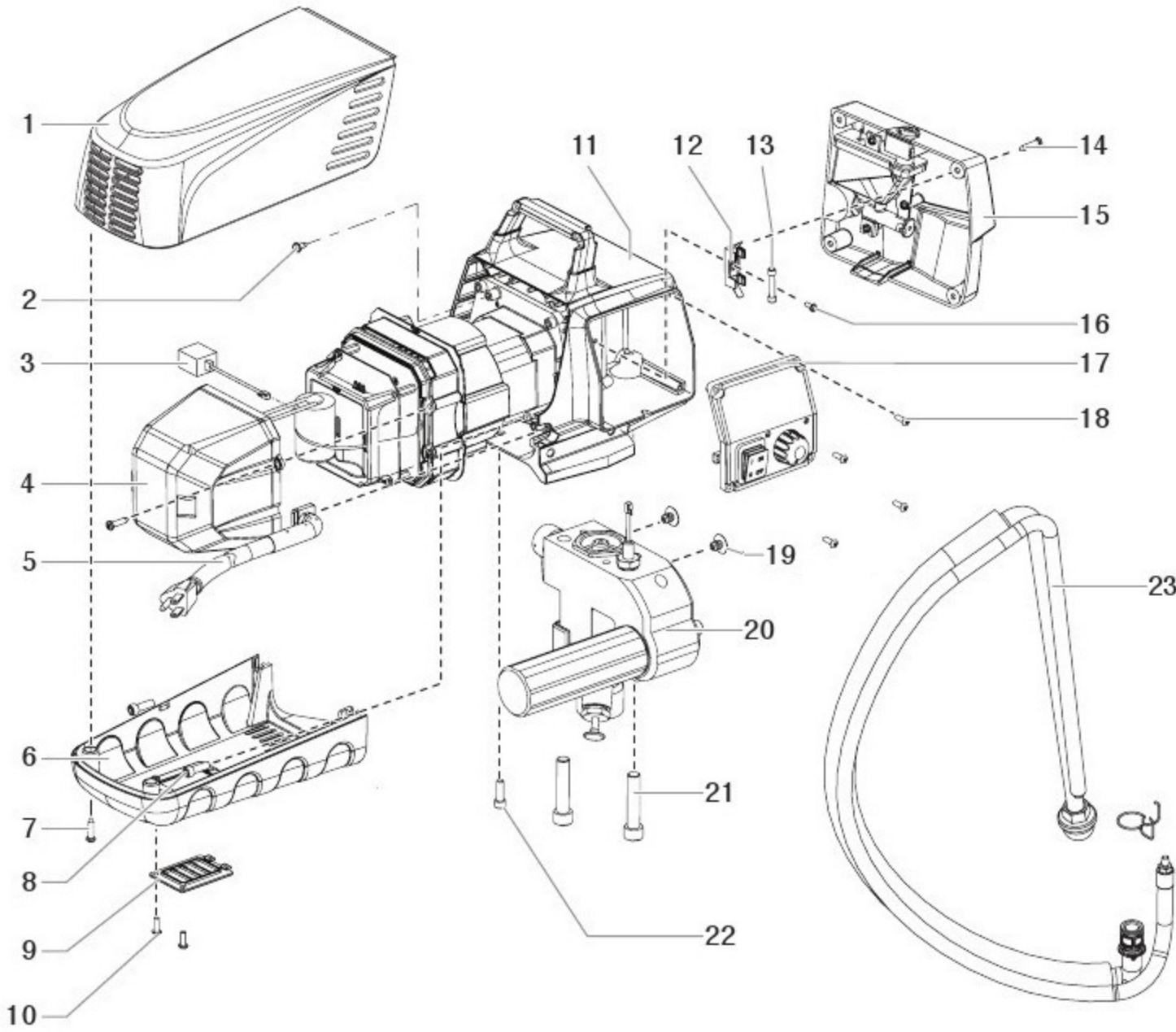


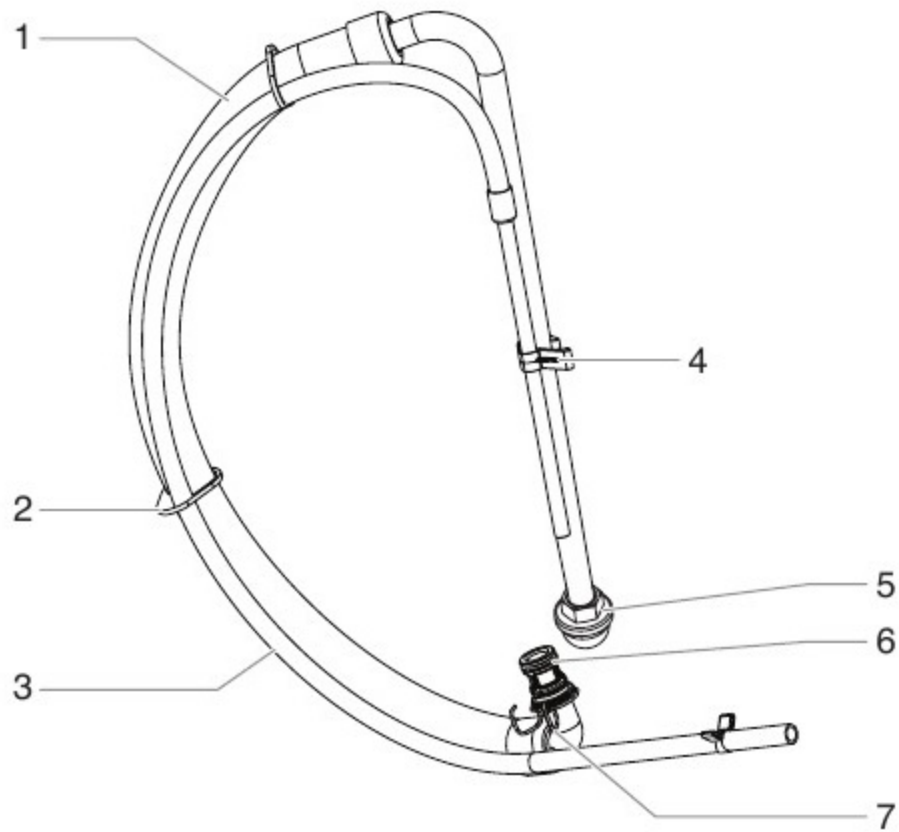
Impact 640

Parts List Main Assembly



Item	Part No.	Description	Quantity
1	805-356A	Motor shroud	1
2	9800340	Ground screw	1
3	704-548	Transducer jumper	1
4	805-462	Motor cover	1
5	805-363A	Power cord assembly (skid)	1
	805-404A	Power cord assembly (cart)	1
6	805-489	Belly pan	1
7	9802266	Belly pan screw	2
8	700-681	Screw	2
9	805-490	Belly pan cover	1
10	700-139	Belly pan screw	2
11	-----	Drive assembly	1
12	0522210	Fuse block	1
13	800-929	Fuse, 15A	1
14	700-139	Face plate screw	4
15	805-215A	Face plate / oiler assembly	1
16	800-203	Fuse block screw	1
17	805-225A	Control panel assembly, complete includes items 24-31)	1
18	700-139	Control panel screw	4
19	704-358	Plug	2
20	805-207A	Fluid section assembly (skid and low rider)	1
	805-233A	Fluid section assembly (cart)	1
21	704-117	Fluid section screw	2
22	700-681	Screw	1
23	0551705	Siphon assembly (skid and low rider)	1
24	805-844	Control panel cover with label	1
25	700-176	Nut with seal	1
26	704-598	Set screw	1
27	805-354	Control knob	1
28	9850936	Switch	1
29	805-401	Digi-Trac™ display	1
30	800-094A	Potentiometer	1
31	0522007	LED assembly	1
32	763-552	Washer	2
33	710-033	Pail bracket bolt	2
34	704-304	Pail bracket	1
35	730-334	Clip	1
36	805-408	Siphon tube	1
37	702-239	Return tube	1
38	710-046	Inlet filter	1
	0551972	Surge protector (not pictured)	1

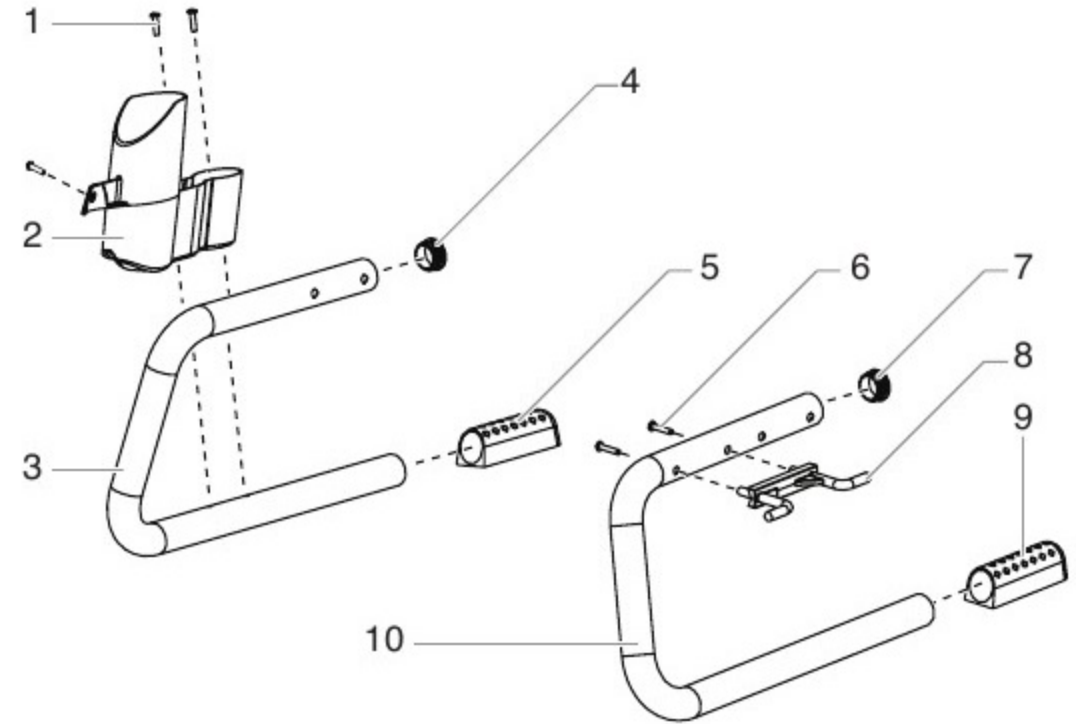
Suction Set Assembly (skid and low rider models)



Suction Set Assembly

Item	Part No.	Description	Quantity
1	0551705	Siphon tube assembly (includes items 1-7)	1
2	9850638	Tie wrap	2
3	0551707	Return tube	1
4	0279459	Clip	1
5	700-805	Inlet screen	1
6	9871105	O-ring	2
7	9822526	Retaining clip	1
	704-109	O-ring (for hot solvents, optional)	

Skid Assembly

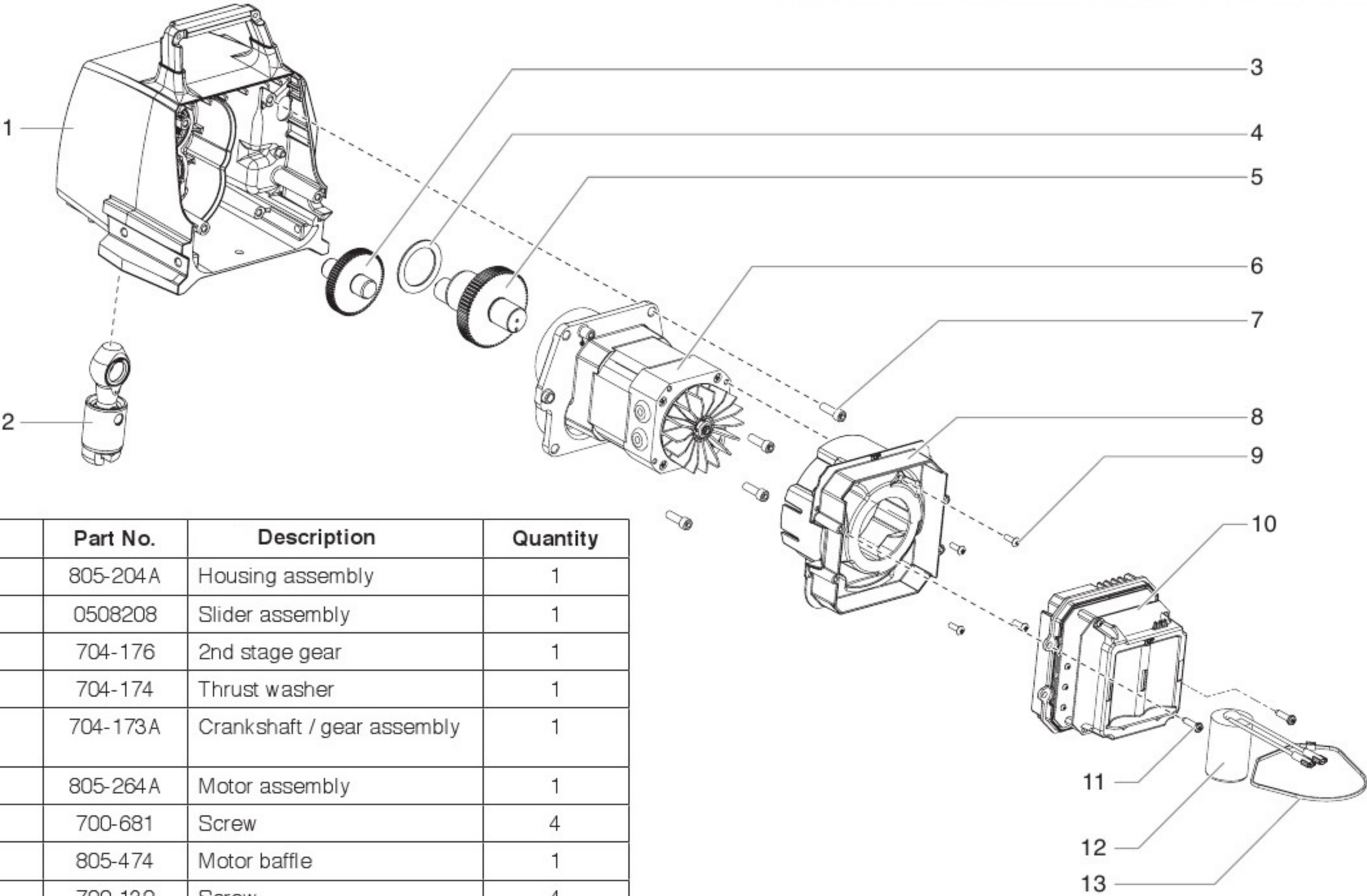


Skid Assembly

Item	Part No.	Description	Quantity
1	9805267	Drip cup screw	3
2	805-343A	Drip cup	1
3	805-328	Leg, right	1
4	0294635	Plug	1
5	805-342	Foot	1
6	700-642	Cord wrap screw	2
7	0294635	Plug	1
8	805-372	Cord wrap	1
9	805-342	Foot	1
10	805-327	Leg, left	1
	805-213A	Left leg assembly (includes items 6-10)	
	805-214A	Right leg assembly (includes items 1-5)	

Drive Assembly

NOTE: All electrical work should be performed by an authorized service center.

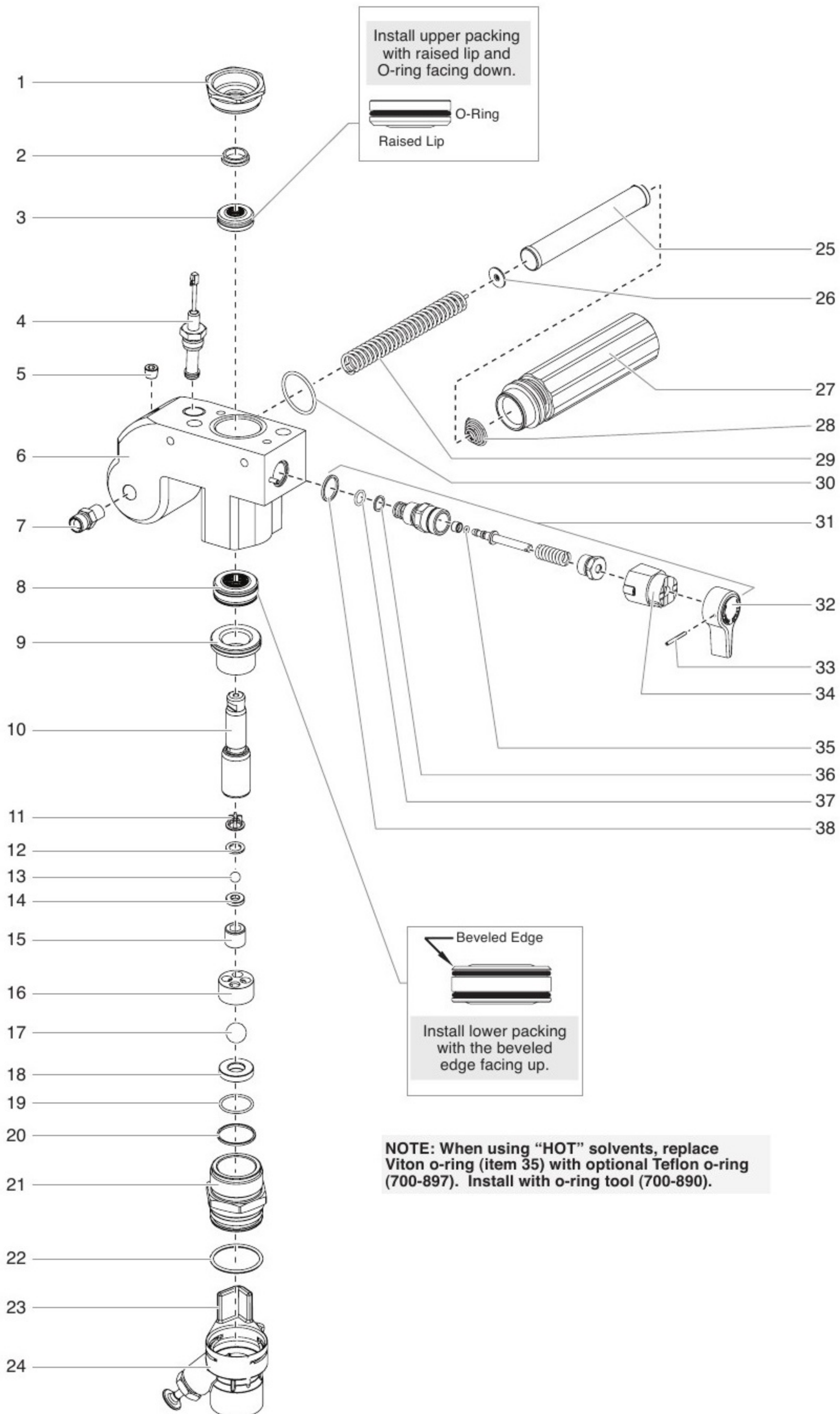


Item	Part No.	Description	Quantity
1	805-204A	Housing assembly	1
2	0508208	Slider assembly	1
3	704-176	2nd stage gear	1
4	704-174	Thrust washer	1
5	704-173A	Crankshaft / gear assembly	1
6	805-264A	Motor assembly	1
7	700-681	Screw	4
8	805-474	Motor baffle	1
9	700-139	Screw	4
10	805-838	Motor controller	1
11	9802266	Screw	1
12	0522023	Capacitor	1

Fluid Section Assembly

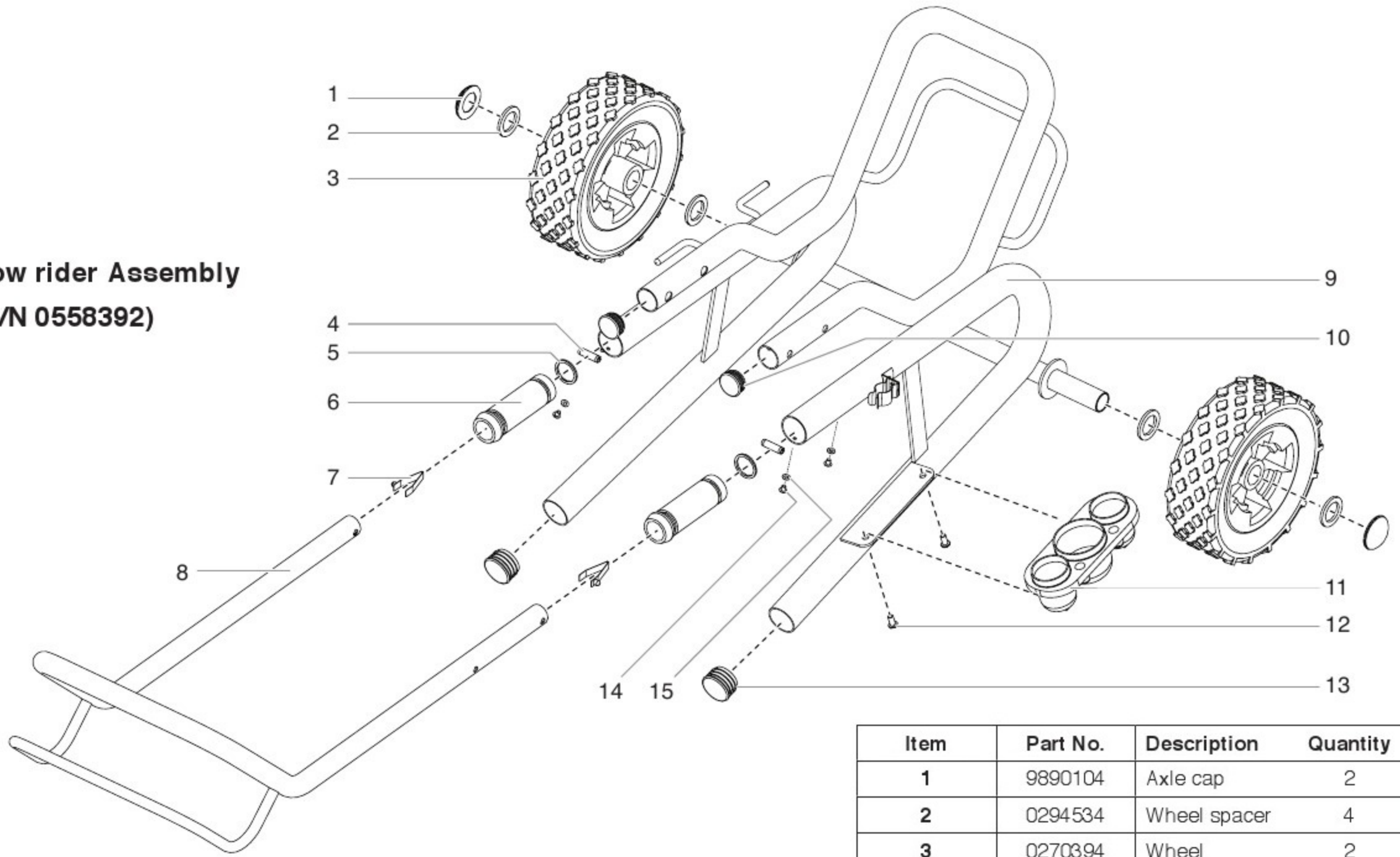
(P/N 805-207A: Skid model/Low boy)

(P/N 805-233A: High-rider model)



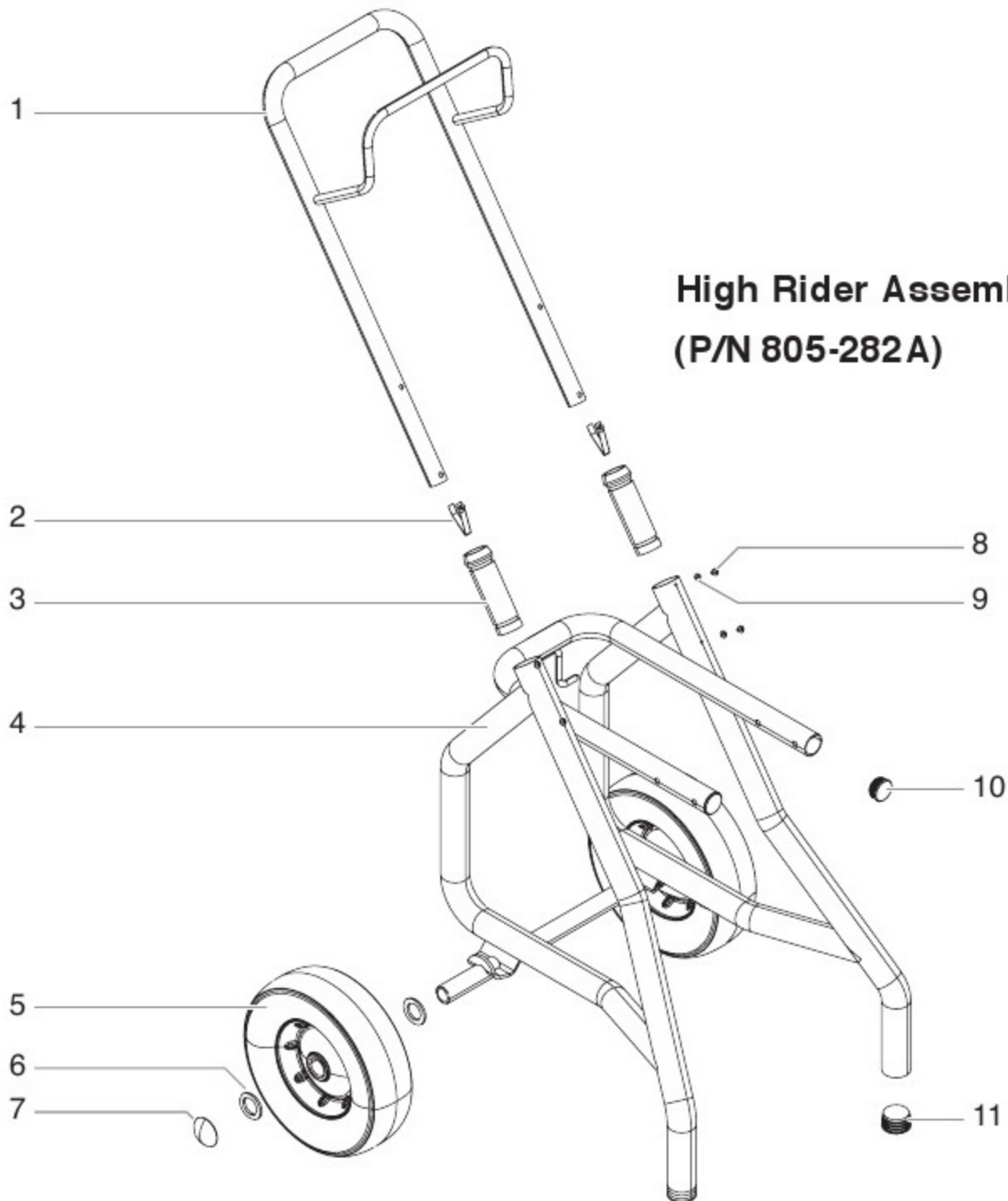
Item Article	Part No. N° de pièce Pieza No.	English Description	Quantity Quantite Cantidad
1	730-508	Retainer	1
2	700-587	Piston guide	1
3	-----	Upper packing	1
4	704-492A	Pressure sensor assembly	1
5	227-028	Pipe plug	1
6	805-324A	Pump block	1
7	227-006	Fitting	1
8	-----	Lower packing	1
9	0509590	Bushing	1
10	704-551A	Piston rod	1
11	704-610	Upper cage	1
12	704-612	Crush washer	1
13	50164	Outlet valve ball	1
14	704-558	Outlet valve seat	1
15	13481	Outlet valve retainer	1
16	704-703	Lower cage	1
17	762-145	Foot valve ball	1
18	762-137	Foot valve seat	1
19	762-058	O-ring, Teflon	1
20	700-821	Foot valve seal	1
21	805-351A	Foot valve	1
22	9871160	O-ring	1
23	805-216A	Pusher assembly, stand and lowboy cart (includes item 22)	1
	805-234A	Pusher assembly, upright cart (includes item 22)	1
24	805-350	Pusher assembly clip	1
25	730-067	Filter	1
26	702-251	Adapter	1
27	704-252	Filter housing	1
28	730-083	Filter spring	1
29	757-105	Filter support spring	1
30	704-297	O-ring	1
31	700-258	PRIME/SPRAY valve assembly	1
32	700-697	Valve handle	1
33	700-759	Groove pin	1
34	700-252	Cam base	1
35	700-721	O-ring, Viton	1
	700-897	O-ring, Teflon (optional)	1
36	222-012	O-ring, Teflon	1
37	221-012	O-ring, Viton	1
38	700-537	Gasket	1
	704-552A	Piston assembly (includes items 10-15)	
	805-845	Outlet valve kit (includes items 11-14 and 20)	
	805-846	Inlet valve kit (includes items 16-20)	
	704-586	Repacking kit (includes items 2-3, 8, 11-13, 17, and 19-20. Also included are packing grease P/N 700-203 and piston guide tool P/N 700-793.)	

**Low rider Assembly
(P/N 0558392)**



Item	Part No.	Description	Quantity
1	9890104	Axle cap	2
2	0294534	Wheel spacer	4
3	0270394	Wheel	2
4	590-508	Roll pin	2
5	590-506	Handle washer	2
6	590-504	Handle sleeve	2
7	9841504	Spring button	2
8	704-309	Handle	1
9	0558463	Cart weldment	1
10	0294635	End cap	2
11	700-1043	Drip cup	1
12	9805230	Drip cup screw	2
13	9885571	Plug	2
14	856-921	Screw	4
15	856-002	Lock washer	4

**High Rider Assembly
(P/N 805-282A)**



Item	Part No.	Description	Quantity
1	805-278	Handle	1
2	9841504	Spring button	2
3	590-504	Handle sleeve	2
4	805-281	Cart weldment	1
5	0278373	Wheel	2
6	0294534	Wheel spacer	4
7	9890104	Axle cap	2
8	856-921	Screw	4
9	856-002	Washer	4
10	0294635	Plug	2
11	9885571	Plug	2