

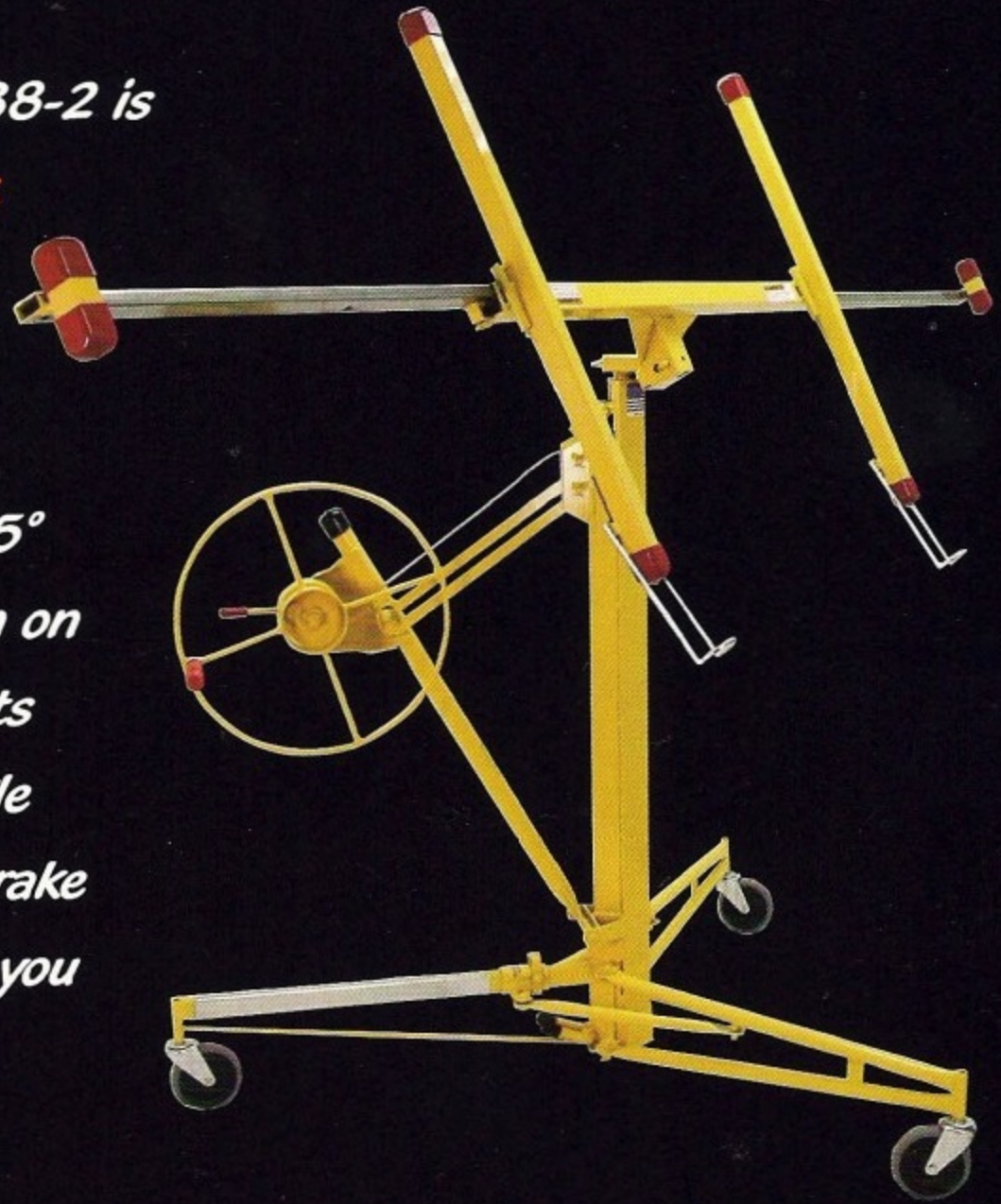


One person is all you need.

Model 138-2

The original PANELLIFT® Model 138-2 is the industry's leading drywall lifter.

Why struggle with wallboard when you can single handedly lift wallboard up to 11 foot walls and ceilings. Cradle tilts laterally 65° for easy loading and for installation on walls and sloped ceilings. It also tilts longitudinally 10°. Fast action, single stage winch with silent cam-lock brake easily lifts and lowers wallboard so you don't have to strain your back!



You asked for it, we did it!

We improved the design of the PANELLIFT® DRYWALL LIFTERS. The upgrades are reflected in the pictures below. The upgrades reflect our greatest effort to improve our products to meet customer expectations and exceed the industry standards.



Jam resistant Tripod Base simplifies assembly / disassembly.

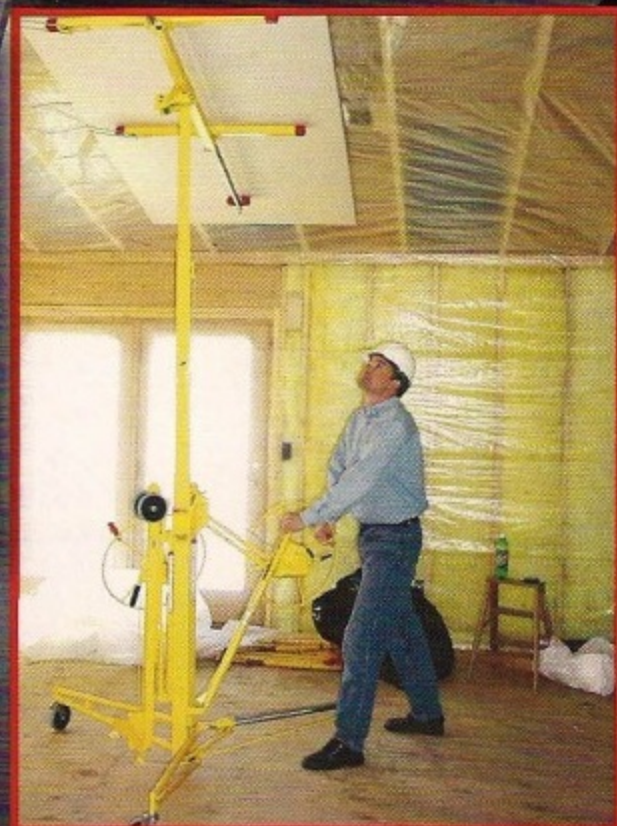


Heavy duty Frame Base and Center Leg stand up to heavy use.



Easy action Cross Arm release simplifies and speeds disassembly.

*The PANELLIFT® Drywall Lifter is ergonomically designed to **save your back**. One person can easily transport, assemble, and operate each model of the PANELLIFT®, making drywalling a **one person job**. No tools are required for assembly. Dismantle the unit and put it into the trunk of your vehicle for easy transport to your next job site. The tripod base folds to allow the assembled unit to pass through doorways. The PANELLIFT® is made in the USA using all-steel construction to handle commercial work loads.*



THE DRYWALL LIFTER
PANELLIFT®