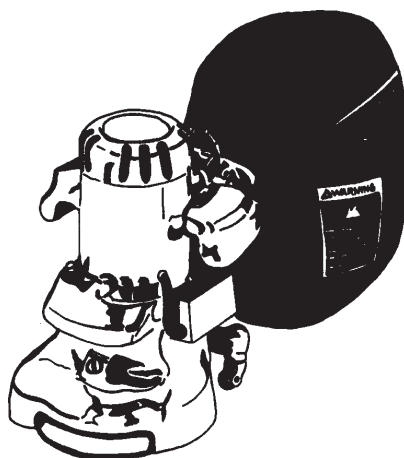

Clarke[®]

American Sanders

**Operator's
Manual**



**American
B-2+ DC
7" Edger**

READ THIS BOOK

This book has important information for the use and safe operation of this machine. Failure to read this book prior to operating or attempting any service or maintenance procedure to your Clarke American Sanders machine could result in injury to you or to other personnel; damage to the machine or to other property could occur as well. You must have training in the operation of this machine before using it. If cannot read English, have this manual explained fully before attempting to operate this machine.

Si Ud. no pueden leer el Inglés, se hagan explicar este manual completamente antes de tratar el manejo o servicio de esta máquina.

All directions given in this book are as seen from the operator's position at the rear of the machine.

For new books write to: Clarke, 2100 Highway 265, Springdale, Arkansas 72764

Contents of this Book

Operator Safety Instructions	3
Introduction and Machine Specifications	5
Machine Set-Up	6
How to Prepare the Machine for Operation	7
Sanding Cuts and Sandpaper	8
How to Operate the Machine	9
Routine Maintenance	9
The Dust Control System	10
How to Adjust the Angle of the Sandpaper Disc to the Floor ..	10
How to Change Adjustment of Machine	10
How to Replace the Light Bulb	10
How to Clean Ventilation Plug	10
Lubrication	11
How to change the Lubricant in the Gearbox	11
How to Check the Carbon Brushes	12
Assembly Drawing #1	14
Assembly Parts List #1	15
Assembly Drawing #2	16
Assembly Parts List #2	17
Wiring Diagram	18

OPERATOR SAFETY INSTRUCTIONS



WARNING



AVERTISSEMENT



ADVERTENCIA

DANGER means:	Severe bodily injury or death can occur to you or other personnel if the DANGER statements found on this machine or in this Operator's Manual are ignored or are not adhered to. Read and observe all DANGER statements found in this Operator's Manual and on your machine.
WARNING means:	Injury can occur to you or to other personnel if the WARNING statements found on your machine or in this Operator's Manual are ignored or are not adhered to. Read and observe all WARNING statements found in this Operator's Manual and on your machine.
CAUTION means:	Damage can occur to the machine or to other property if the CAUTION statements found on your machine or in this Operator's Manual are ignored or are not adhered to. Read and observe all CAUTION statements found in this Operator's Manual and on your machine.



DANGER:



Failure to read the Operator's Manual before operating or servicing this sanding equipment could result in injury to the operator or to bystanders and could cause damage to the equipment. Read and observe all safety statements found in this manual and on the sanding equipment. Make sure all labels, decals, warnings, cautions and instructions are fastened to the equipment. Replace any that are damaged or missing. You must have training in the operation of this equipment before using it. **If the operator is unable to read this manual, have it explained fully before they attempt to use this equipment.**



DANGER:



Sanding/finishing wood floors can create an environment that can be explosive. The following safety procedures must be adhered to:

- Cigarette lighters, pilot lights and any other source of ignition can create an explosion when active during a sanding session. All sources of ignition should be extinguished or removed entirely if possible from the work area.
- Work areas that are poorly ventilated can create an explosive environment when certain combustible materials are in the atmosphere, i.e., solvents, thinners, alcohol, fuels, certain finishes, wood dust and other combustible materials. Floor sanding equipment can cause flammable material and vapors to burn. Read the manufacturer's label on all chemicals used to determine combustibility. Keep the work area well ventilated.
- Spontaneous combustion or an explosion can occur when working with sanding dust. The sanding dust can self-ignite and cause injury or damage. Sanding dust should be disposed of properly. Always empty the sanding dust into a metal container that is located outside of any building(s).
- Remove the contents of the dust bag when the bag is 1/3 full. Remove the contents of the dust bag each time you finish using the equipment. Never leave a dust bag unattended with sanding dust in it.
- Do not empty the contents of the dust bag into a fire.
- Hitting a nail while sanding can cause sparks and create an explosion or fire. Always use a hammer and punch to countersink all nails before sanding floors.

**DANGER:**

Operating partially assembled sanding equipment could result in injury to the operator or bystander and could cause damage to the equipment or to other property.

- Do not operate this equipment unless it is fully assembled and all guards, doors and covers are secured.
- Keep all fasteners tight.
- Keep all adjustments within manufacturer's specifications.

**DANGER:**

Moving parts on this sanding equipment can cause injury to the operator or bystanders.

- Keep hands, feet and loose clothing away from all moving parts.
- Do not change or adjust the abrasive while the sanding equipment is running.
- Do not service the sanding equipment while it is running.

**DANGER:**

This sanding equipment requires a supply of electricity. Improper use could result in electrical shock or fire.

- Connect only to an electrical source matching what is shown on the equipment nameplate.
- Do not use this sanding equipment on an ungrounded electrical circuit. Consult an electrician if you suspect the circuit is not properly grounded.
- Do not use this sanding equipment with a damaged electrical cord. Inspect before each use.
- Avoid striking the electrical cord with the abrasive. Always lift the electrical cord over the sanding equipment.
- Do not use the electrical cord to move the sanding equipment.
- Disconnect the electrical source before servicing this equipment.

**WARNING:**

Injury to the operator or bystander can occur if protective gear is not worn while sanding. Always use eye, ear, and respiratory protection while performing any sanding operation.

**WARNING:**

Bodily injury could occur if power is applied to the equipment with the power switch already in the "ON" position. Always check to assure that the power switch is in the "OFF" position before connecting power supply.

**CAUTION:**

Maintenance and repairs performed by unauthorized personnel could result in damage or injury. Maintenance and repairs performed by unauthorized personnel will void your warranty. Servicing of this unit must always be referred to an authorized Clarke American Sanders distributor.

**CAUTION:**

Use of this equipment to move other objects or to climb on could result in injury or damage. Do not use this equipment as a step or furniture. Do not ride on this equipment.

**CAUTION:**

Damage could occur to the equipment if not properly kept in a dry building for storage. Store the equipment in a dry building.

**CAUTION:**

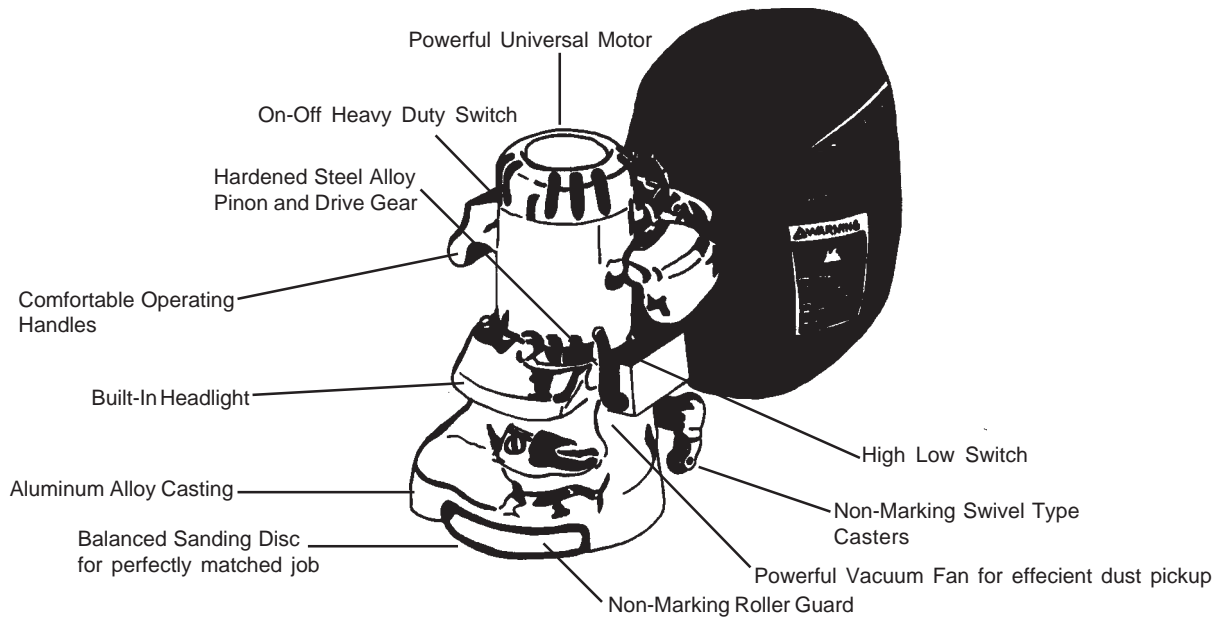
Serious damage to the floor can occur if the sanding equipment is left running in one spot while the sanding disc is in contact with the floor. To avoid damage to the floor, do not dwell while lowering or raising the sanding disc. Always sand with a constant motion.

Introduction and Machine Specifications

The American B-2 is specifically designed for finishing floor edges, stairs, and other hard-to-reach surfaces. The handle location and low center of gravity make the American B-2 easy to operate.

The excellent cutting power comes from a powerful universal type motor. A motor that delivers maximum performance without slowing down or overheating. Its exclusive two speed control when switched to hi-speed produces 3200 rpm for fast, rough sanding. At low speed, the American B-2 operates at 2800 rpm for fine, finish sanding. A non marking disc guard protects the rubber pad, permitting the edger to work right up to the base-board or wall.

Also standard is a convenient built-in headlight. Powerful fan and sanding disc housing design provides efficient dust pickup. Plus an easy to remove dust pipe that makes cleaning a quick and simple task.



SPECIFICATIONS

Model	07127A	07128A
Electrical Requirements	115V ~, 60 Hz 12.0A, 1.3 kW	230V ~, 50 - 60 Hz 6.0A, 1.3 kW
Frame	Aluminum	Aluminum
Disc	Heavy duty steel precision balanced, 7" dia. 2800 rpm low speed, 3200 rpm high speed, heat resistant rubber pad.	Heavy duty steel precision balanced, 7" dia. 2800 rpm low speed, 3200 rpm high speed, heat resistant rubber pad
Gears	Hardened steel alloy pinion and manganese bronze drive gear.	Hardened steel alloy pinion and manganese bronze drive gear.
Bearings	Sealed ball bearings, lifetime lubricated.	Sealed ball bearings lifetime lubricated.
Switch	Positive action, on-off toggle	Positive action, on-off toggle
Dust Collector	Powerful vacuum fan, full aluminum skirt	Powerful vacuum fan, full aluminum skirt
Cord	25'	25'
Height (overall)	13½"	13½"
Diameter	9⅛"	9⅛"
Disc Diameter	7"	7"
Weight	32 lbs.	32 lbs.
Shipping Weight	46 lbs.	46 lbs
Warranty	1 year limited	1 year limited

Machine Set-up

This sanding machine is designed to be operated with a remote vacuum dust collection system or with the included dust bag.

Preparing Remote Vacuum Dust Collection Systems

To prepare the machine for remote vacuum dust collection systems that have a 2" hose end, follow this procedure:

1. Install 2" hose end directly over the exhaust tube.
2. The exhaust tube can be rotated for optimum convenience.

To prepare the machine for remote vacuum dust collection systems that have a 1 ½" hose end, follow this procedure:

1. Install the 2" x 1½" hose end adaptor (Part No. 30563A) over the exhaust tube.
2. Insert 1 ½" hose end into the adaptor.

NOTE: Start the remote vacuum collection system before operation.

Preparing to use the included dust bag

To prepare the machine for use with the included dust bag (Part No. 53544A), follow this procedure:

1. Press the bag opening over the exhaust tube until the internal rib of the bag opening engages into the annular groove on the exhaust tube. This is best done by pressing on the back of the bag opening with the palm of your hand.
2. The exhaust tube can be rotated for optimum convenience.
3. To remove the dust bag from the exhaust tube, pry up the end of the bag opening to partially release the internal rib from the groove, then pull.
4. To empty the dust bag, unzip the disposal flap and force contents out by inverting the bag.

NOTE: For best results, empty frequently. Follow all warnings posted in this manual and on the dust bag.

HOW TO PREPARE THE MACHINE FOR OPERATION

How to Install the Sandpaper

NOTE: Use a sandpaper disc that has a 7" diameter and a $\frac{7}{8}$ " hole in the center.

1. Put the machine upside down.
2. A special wrench is in the bracket behind the motor. Use the special wrench to remove the screw and washer from the center of the sanding pad. See Figure 1.
3. Put the sanding disc in position on the sanding pad.
4. Put the special washer and the holding screw in position in the center of the sanding pad.
5. Put one hand on the sandpaper. Using the special wrench, turn the screw clockwise with the other hand. Make sure the screw is tight. See Figure 2.



Figure 1

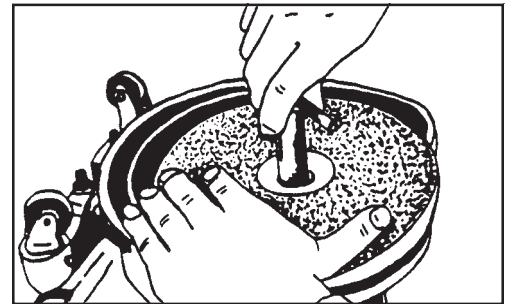


Figure 2

Sanding Cuts and Sandpaper

Initial Cut

The purpose of the initial cut is to remove old finish and gross imperfections on the floor surface. A coarse abrasive should be used. If the surface is severely damaged by deep scratches, pre-existing dwell marks, uneven planks, etc., it may be necessary to sand across or diagonally to the grain to restore evenness to the surface. If these conditions are not present, the initial cut should be done in the direction of the grain.

If glazing, loading, or burning takes place immediately into an initial cut, select a coarser abrasive. If this should occur during an initial cut, the abrasive has dulled and must be replaced.

Final Cuts

The purpose of a finishing cut is to remove the scratches produced during the initial cut. Use a fine (60 - 80 grit) grain abrasive.

If the surface remains rough after a finishing cut, it may be necessary to use an even finer grain of abrasive (80 - 100 grit). Care should be taken in selecting the grit size of the abrasive. A very fine grain will close the pores on a wood floor making admission of a stain difficult.

If glazing or burning should occur immediately into a finishing cut, increase pace. If it should occur during a finishing cut, the abrasive has dulled and must be replaced.

Grain	Use	Standard Grade Part #/Qty
12 grit 16 grit 20 grit	For removing gross imperfections and restore evenness to old flooring. To remove build-up of paints and varnishes.	945300/50 945301/50 945302/50
30 grit 36 grit	For first sanding of new flooring (maple, oak). For removing minor imperfections and finishes from old flooring.	945305/100
40 grit	For initial cut on new flooring (oak, walnut). For removing minor imperfections and finishes from old flooring.	
50 grit	For first sanding of new flooring (cedar, pine, fir) For clean-up of 16 grit.	
60 grit	For clean-up from initial cut 36 grit.	945308/100
80 grit	For final sanding of certain hardwoods. For clean-up of initial cuts (50 grit).	945309/100
100 grit	For final sanding of certain hardwoods and conifers where a smooth surface is desired.	945310/100
120 grit	For finishing cut on certain conifers.	
150 grit	For finishing cut on certain conifers where a smooth surface is desired.	

HOW TO OPERATE THE MACHINE

⚠ DANGER: Failure to remove the electrical plug from the electrical outlet before attempting any service or maintenance could result in electrocution or severe injury. Always unplug the machine before attempting any service. Never leave machine unattended while plugged in.

To operate the machine follow this procedure:

1. Move the machine to the location of your work.
2. Connect the extension cord to the short power cord on the machine. See figure 3.
3. Connect the other end of the extension cord to the power supply outlet.
4. Put the variable speed switch in the "HI" position (1). See figure 4. After reaching full speed, put the switch in the "LO" position if low speed is needed.

NOTE: The high speed operation is for fast wood removal. For finish cuts and custom work, use the low speed operation.

5. Tilt the machine back so that the sandpaper disc does not touch the floor. See (1) in Figure 5. Hold both handles. See (2) in Figure 5.
6. Put the On/Off switch in the "ON" position. See (3) in Figure 5.
7. Keep the machine moving as you lower the sandpaper disc to the floor surface.
8. Do not press down on the machine. The weight of the machine gives enough pressure for all types of sanding.

NOTE: Do not store or rest the machine on the sanding disc assembly. It may cause the disc to become warped or cause it to be out of balance.

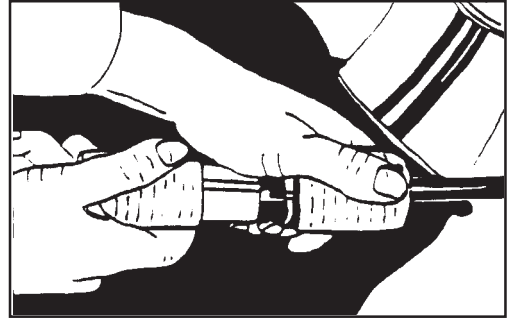


Figure 3

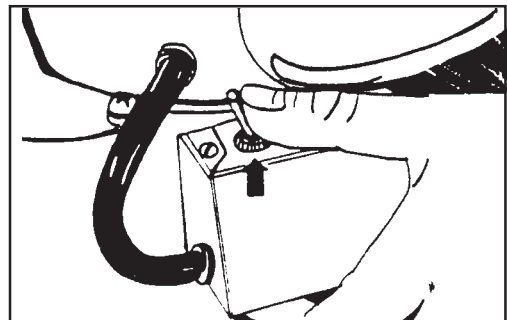


Figure 4

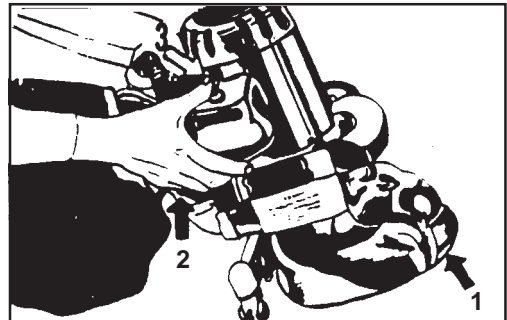


Figure 5

MAINTENANCE

⚠ CAUTION: Maintenance and repairs performed by unauthorized personnel could result in damage or injury. Maintenance and repairs performed by unauthorized personnel will void your warranty. Servicing of these units must always be referred to an authorized Clarke American Sanders distributor.

The Dust Control System

Remove the dust from the bag when the bag is 1/3 full or when the efficiency of the dust control system decreases.

If the exhaust pipe gets an obstruction, follow this procedure:

1. Remove the four screws that hold the exhaust pipe to the housing. See figure 6.
2. Remove the obstruction from the exhaust pipe.
3. Install the exhaust pipe.

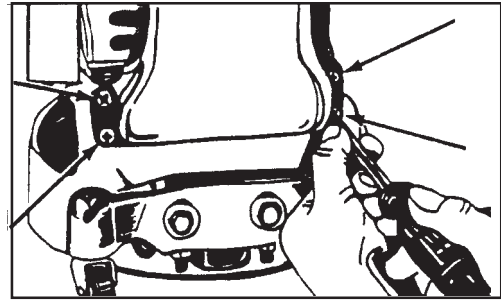


Figure 6

How to Adjust the Angle Of The Sandpaper Disc To The Floor

The adjustment of the machine is correct when the front part of the sandpaper disc makes contact with the floor.

To change the adjustment of the machine, follow this procedure:

1. Using the special wrench, loosen the lock nut on each caster. See (1) figure 7.
2. Loosen the jam nut. See (2) figure 7.
3. Raise or lower the casters as needed.
4. Tighten the jam nut on each caster.
5. Tighten the lock nut on each caster.

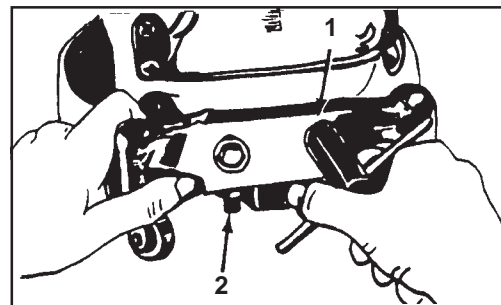


Figure 7

How To Replace The Light Bulb

To replace the light bulb, follow this procedure:

1. Remove the two screws that hold the light guard to the housing. See figure 8.
2. Remove the light guard.
3. Remove the light bulb from the socket.
4. Install a new light bulb.
5. Put the lamp guard in position.
6. Install the two holding screws.



Figure 8

The Ventilation Plug

1. To clean the ventilation opening in the center of the plug, remove the plug from the machine. With the plug removed, also inspect the grease in the gearbox. See figure 9.



Figure 9

Lubrication

The machine is completely lubricated. The bearings and gears in the gear unit have enough lubricant for approximately six months of normal operation. All other bearings are sealed and have enough lubricant for the life of the machine. No lubricant is needed for the rotating disc guard.

How To Change The Lubricant In The Gearbox

To change the lubricant in the gearbox, follow this procedure:

1. Put the machine upside down on a bench.
2. Align one of the two holes in the rubber pad with one of the three holes in the rotating disc guard.
3. Align both holes with one of the three screws in the gear housing cover. Remove the screw from the gear housing cover. See figure 10.
4. Align the holes with each of the other two screws, then remove screws.

CAUTION: Make sure no dust enters the gear box. Damage could occur to the gear box.

5. Remove the cover from the gear housing.
6. Remove the old lubricant from the gearbox.
7. Add ten ounces of Clarke American Sanders lubricant to the gearbox.

CAUTION: To prevent damage to the motor, do not add more than ten ounces of lubricant to the gearbox.

8. Using the three screws removed above, install the cover on the gear housing.
9. Start the machine and let it run for 15 minutes. A small amount of excess lubricant should flow out the vent hole. If none appears it may be necessary to add additional lubricant.
10. Wipe off excess lubricant and clear vent hole.

How To Check The Carbon Brushes

Depending on use, a set of brushes can be expected to last 250 hours and should be inspected sometime prior to that time.

To check the brushes, follow this procedure:

1. Remove the motor cover. See figure 11.
2. Inspect the carbon brushes. Replace both brushes if either brush has worn to 3/8" in length, or is worn to the wear indicator. See figure 12.
3. To replace the brushes, disconnect the field wire (A) from the brush holder (B). Then remove the two screws and washers (C) securing the holder to the motor housing. See figure 13.

Lubricants

Qty	Part No.
1 Qt.	16610A
1 Gal.	16611A

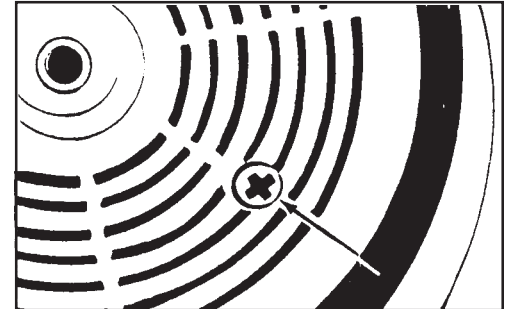


Figure 10

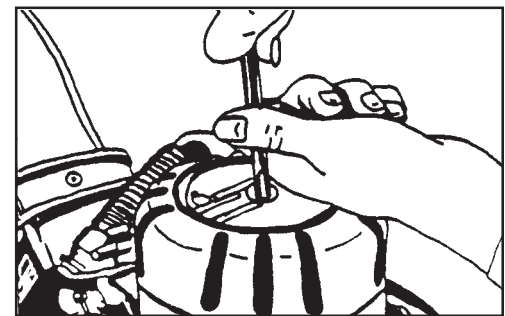


Figure 11

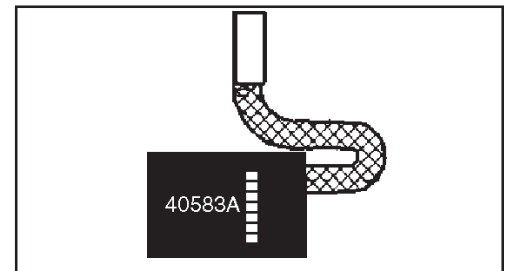


Figure 12

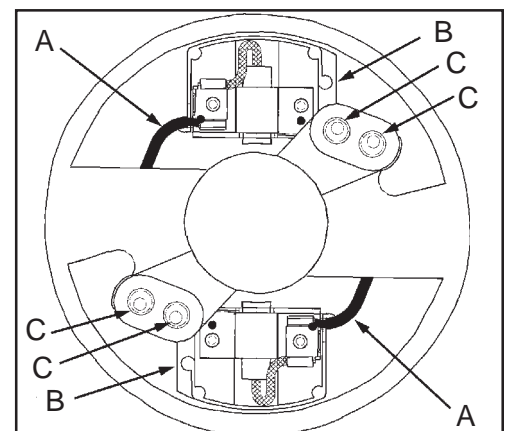


Figure 13

How To Check The Carbon Brushes (cont)

4. Gently pry the holder down from the motor housing.
5. Rotate holder from beneath the motor housing and lift out.
6. Disconnect the brush shunt wire from the holder. For convenience, cut the terminal from the shunt wire and remove brush.
7. To put in a new carbon brush, negotiate the terminal on the shunt wire by the spring and brush holder guide. Take care not to damage the spring. See figure 14.
8. Depress the brush into the guide and connect the shunt wire to the holder.
9. Depress the brush and insert the holder into the motor housing.
10. Rotate holder beneath motor housing. Relax brush against commutator.
11. Align posts on holder with holes in housing.
12. Gently pry the holder into the housing.
13. Reattach screws and washers.
14. Start up the machine, if sparking between either brush and the commutator occurs, use a brush seating stone on the commutator to promote full engagement between the brushes and commutator.
15. Install the motor cover.

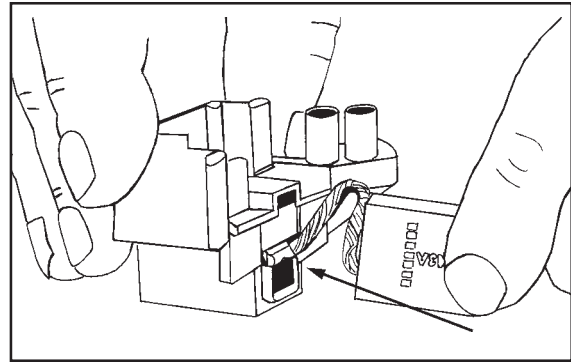
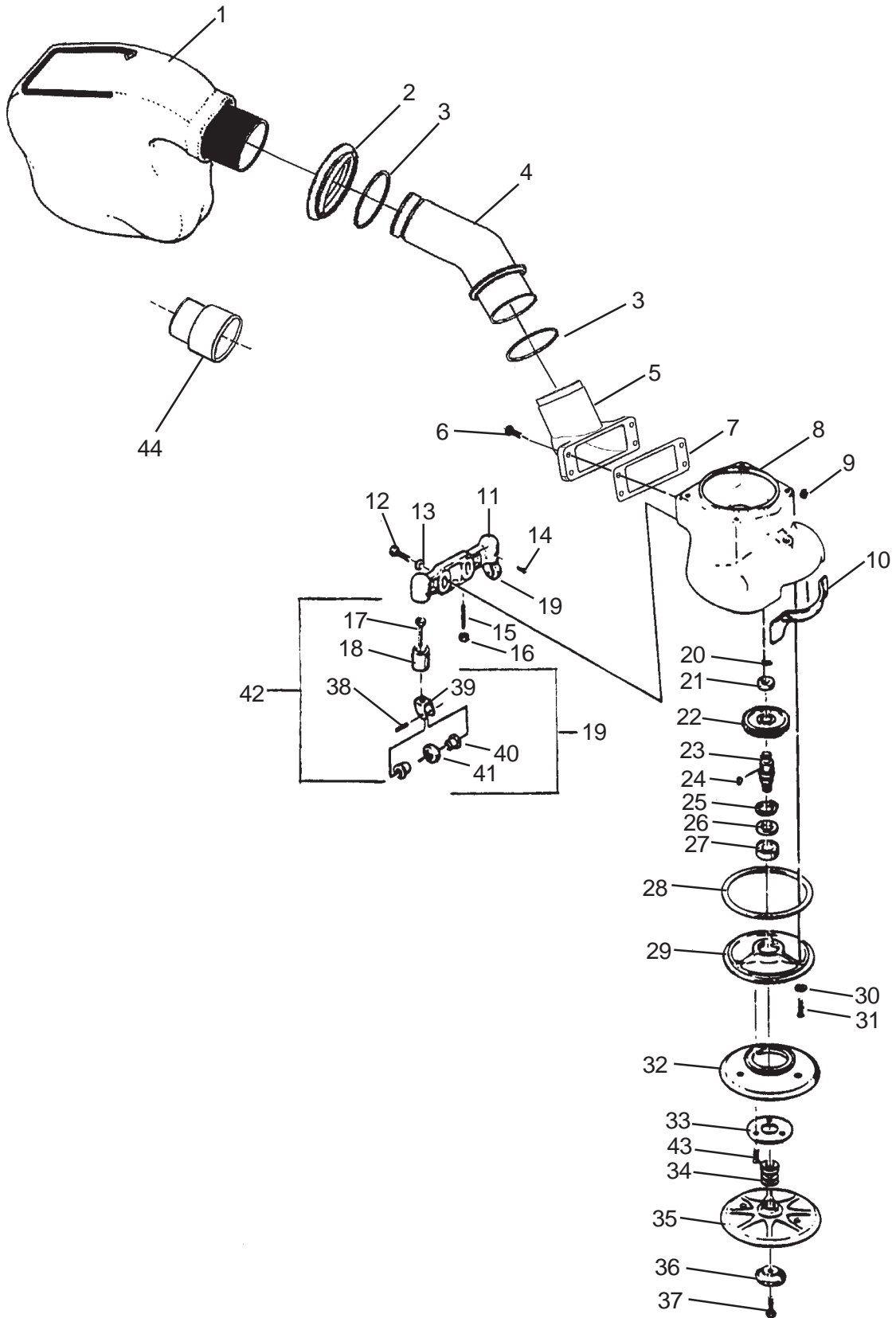


Figure 14

Clarke
American Sanders
 Model American B-2+ 7" Spinner Edger
 Drawing #1 11/04



Clarke
American Sanders

Model American B-2+ 7" Spinner Edger
Parts List #1 11/04

Ref.	Part No.	Description	Qty.
1	53544A	Bag, Dust	1
2	80276A	Nut, Slip Joint 2" x 2"	1
3	30613A	Washer Seal	2
4	61712A	Tube, Exhaust	1
5	21078A	Adaptor, Exhaust	1
6	962454	Screw - ¼ - 20 x 1	4
7	34233A	Gasket	1
8	24509B	Housing - Gear	1
9	66130A	Plug	1
10	38103A	Gasket	1
11	21106A	Barcket - Caster	1
12	85814A	Screw - 5/16 - 18 x 1¼ Hx Hd	2
13	980676	Washer - 5/16 Fit	2
14	962015	Screw-Set 10-24 x 3/8	2
15	86203A	Screw - 5/16-18 x 1½ St	2
16	920160	Nut - 5/16-18 Hx Jam	2
17	85701A	Screw-¼-20 x 1½ Hx St	2
18	51128A	Bearing	2
19	19901A	Yoke Assembly - Caster	2
20	467308	Ring - Retaining	1
21	51127A	Bearing	1
22	61568A	Gear	1

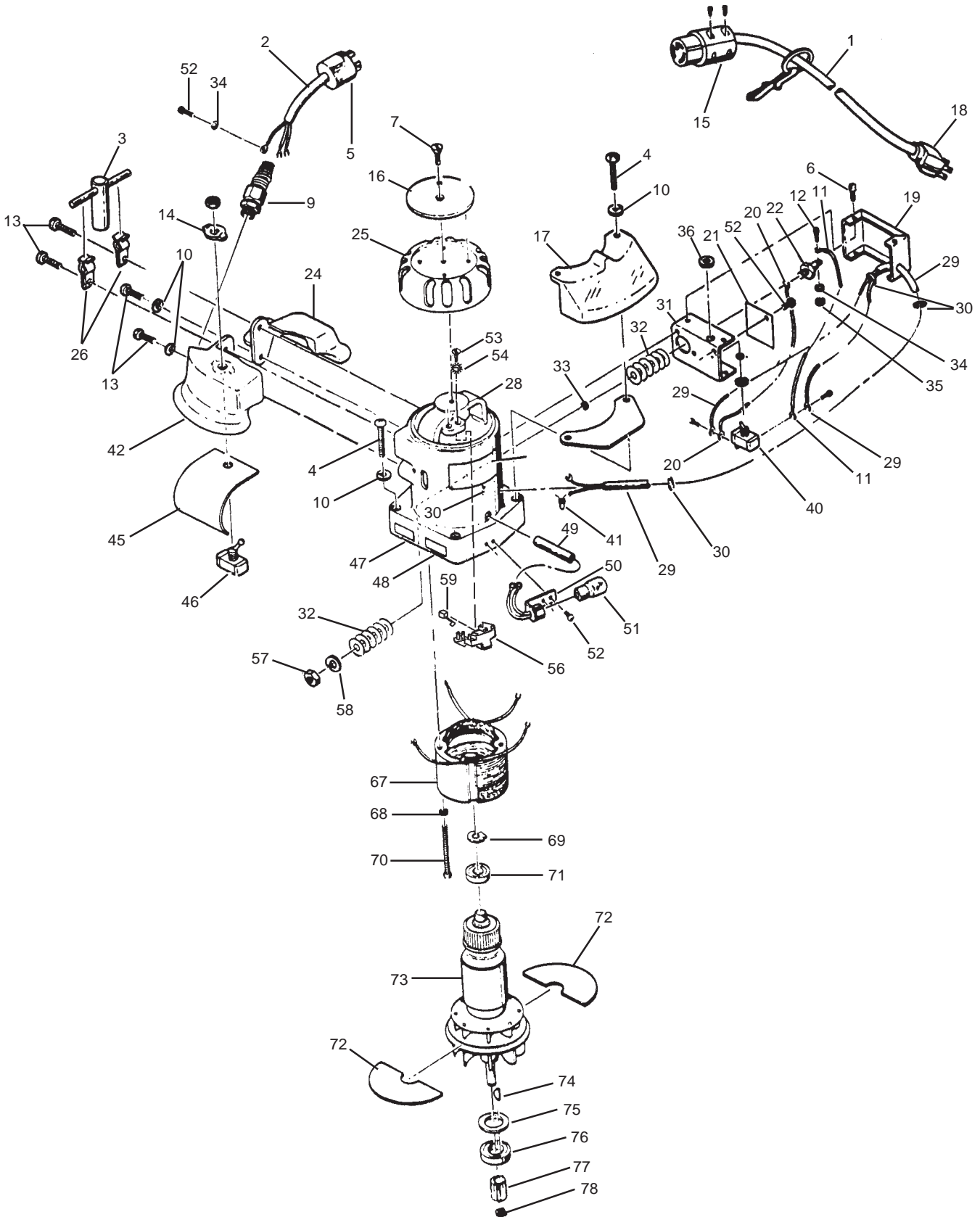
Ref.	Part No.	Description	Qty.
23	67426A	Shaft	1
24	915028	Key	1
25	57702A	Ring - Retaining	1
26	58114A	Seal - Oil	1
27	902550	Bearing	1
28	34232A	Gasket	1
29	12906A	Cover - Gearcase	1
30	59817A	Washer - 1/4 Nylon Countersink	3
31	962098	Screw - ¼-20 x ¾ Fit Hd	3
32	15000A	Guard - Roller	1
33	66917A	Retainer	1
34	39707A	Washer - Felt	4
35	13200A	Disc - Sanding	1
36	62411A	Clamp - Paper	1
37	85715A	Screw - 5/16-18 x 1 Hx Hd	1
38	925592	Pin ¼ x 1 Spirol	2
39	29404A	Yoke, Edger Caster	2A
40	50740A	Bearing, Ball, ¼ x ¾ Shield	4
41	299704	Roller Caster	2
42	12203A	Caster Assembly	2
43	84200A	Screw - 8-32 x ½ Fit Hd	4
44	30563A	Adaptor, 2" Tube x 1 1/2" Hose	1
NI	52853A	Edger Skirt, B-2	1

Note: Ref. #19 (19901A) includes ref #'s 17, 38, 39, 40 (2), & 41

NI = Not illustrated

Note: Ref. #42 (12203A) includes ref #'s 17, 18, 38, 39, 40 (2), & 41.

Clarke
American Sanders
Model American B-2+ 7" Spinner Edger
Drawing #2 11/04



Clarke
American Sanders

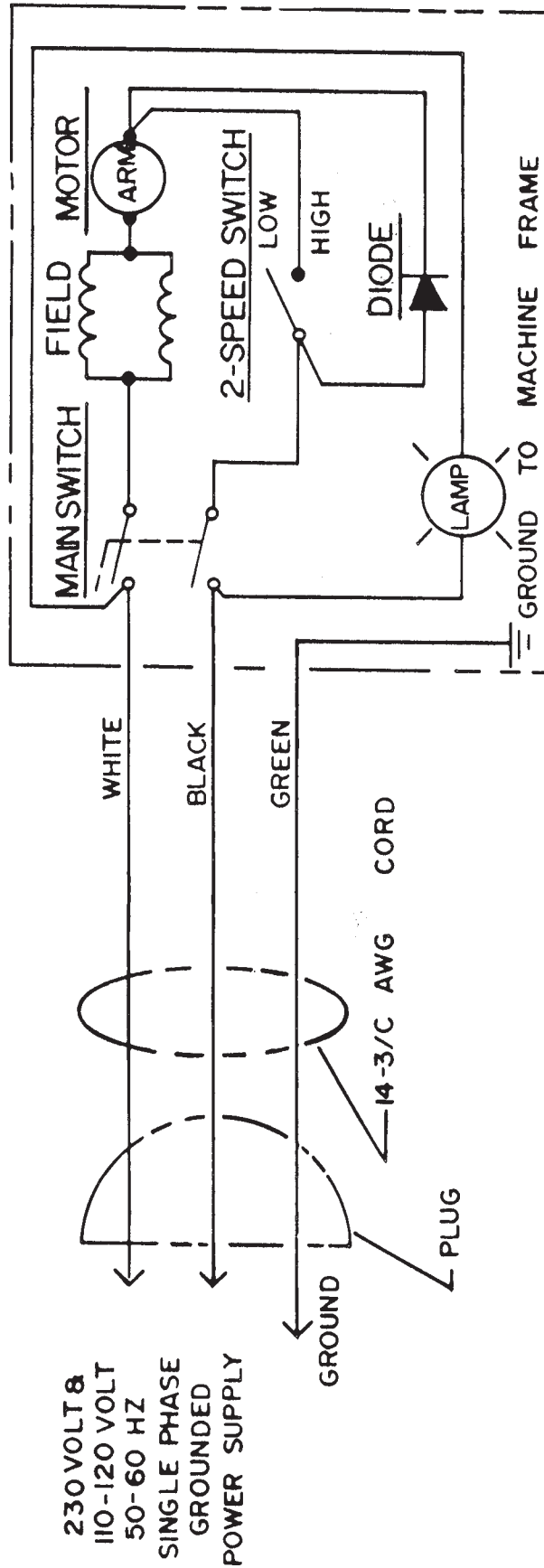
Model American B-2+ 7" Spinner Edger
Parts List #2 11/04

Ref.	Part No.	Description	Qty.
1	42234A	Cord Assembly - 115 V	1
	42301A	Cord Assembly - 230 V	1
	40007A	Cord Assembly, 50', w/AU1-10P	1
2	41919A	Cord - Interconnecting - 115 V	1
	41920A	Cord - Interconnecting - 230 V	1
3	68705A	Wrench - Special	1
4	85333A	Screw - 1/4-20 x 2 Pn Hd	4
5	912169	Plug - Male Twist Lock - 115 V	1
	45602A	Plug - male Twist Lock - 230 V	1
6	85411A	Screw - 6-32 x1/4	4
7	80081A	Screw - 5/16-24 x 1/2 FT	1
9	337504	Strain Relief	1
10	980657	Washer - 1/4 Lock	8
11	49301A	Wire Assembly	1
12	962330	Screw - 6-32 x 1/4 RD St Mach	1
13	962454	Screw - 1/4-20 x 1	4
14	646302	Plate - Switch	1
15	911461	Connector 115V	1
	41708A	Connector 230V	1
16	70686A	Plate - Name	1
17	22113A	Cover	1
18	45603A	Plug - 230V	1
	911248	Plug -115V	1
19	40023A	Plug, AU1-10P	1
	16091A	Switch Box	1
20	49302A	Wiring Assembly	1
21	46711A	Paper Insulating	1
22	42400A	Diode	1
24	24303A	Handle - Left	1
25	62003A	Cap - Motor Housing	1
26	64601A	Holder - Wrench	2
28	24510A	Housing - Motor	1
	24535A	Housing - Motor (AU)	1
29	41918A	Wiring Assembly	1
30	54816A	Relief - Strain	4
31	16091A	Box - Switch	1
32	48800A	Washer - Insulating	12
33	41001A	Bushing - Insulating	3

Ref.	Part No.	Description	Qty.
34	87201A	Washer - Lock #6	2
35	920112	Nut - 6 x 32 Hex	1
36	50431A	Plate, Switch Hi-Lo	1
39	38104A	Seal	1
40	47320A	Switch - Toggle HiLo	1
41	911139	Nut - Wire	1
42	24302A	Handle - Right	1
45	46710A	Shield - Insulating	1
46	47322A	Switch - On/Off	1
47	215103	Label	1
48	215110	Label	1
49	39305A	Tubing	1
50	18403A	Socket	1
51	911113	Bulb - 115V	1
	911116	Bulb - 230V	1
52	962065	Screw, 8-32 x 1/4 Pn St Mach	6
53	962727	Screw, 8-32 x 1/2 Pn St	4
54	980621	Washer, Star	4
55	980643	Washer, 7/16 OD x .036 Thk	2
56	40717A	Holder, Brush	2
57	81300A	Nut	1
58	980601	Washer - SH #1214	1
59	40583A	Brush, Carbon Terminated	2
67	40718A	Field Assembly - 115V	1
	40719A	Field Assembly - 240V	1
68	980699	Washer - SH #1210	2
69	58602A	Spring	1
70	85358A	Screw - 10-24 x 3 1/2 Pn SS	2
71	51126A	Bearing	1
72	60800A	Baffle	2
73	10111A	Armature - 115V	1
	10112A	Armature - 230V	1
74	65302A	Key	1
75	58113A	Seal	1
76	902550	Bearing	1
77	63701A	Gear - Pinion	1
78	57701A	Ring - Retaining	1
N	31408A	Edger Case, B2	1

NI = Not illustrated

Clarke
American Sanders
 Model American B-2 7" Spinner Edger
 Wiring Diagram 3/93



WIRING DIAGRAM - MODEL - AMERICAN B-2 EDGER

CAUTION - Repairs by qualified personnel only.
 ACHTUNG - Reparaturen nur durch Facharbeiter.
 PRECAUTION - Reparations par personnel specialise seulement.
 PRECAUCION - Reparaciones unicamente personal calificado deberian hacer reparaciones.



CLARKE PRODUCT SUPPORT BRANCHES

U. S. A. Locations

PRODUCTION FACILITIES

Clarke®, Springdale, Arkansas
2100 Highway 265
Springdale, Arkansas 72764
(479) 750-1000
Customer Service - 1-800-253-0367
Technical Service - 1-800-356-7274

American Lincoln®, Bowling Green, Ohio 43402
1100 Haskins Road

SERVICE FACILITIES

Clarke®, Elk Grove, Illinois 60007
2280 Elmhurst Road
(847) 956-7900

Clarke®, Denver, Colorado 80204
1955 West 13th Ave.
(303) 623-4367

Clarke®, Houston, Texas 77040
7215 North Gessner Road
713-937-7717

SERVICE AND SALES FACILITY

American Lincoln® / Clarke, Madison Heights,
Michigan 48071-0158
29815 John R.
(810) 544-6300

American Lincoln® / Clarke, Marietta, Georgia 30066
1455 Canton Road
(770) 973-5225

SALES AND DISTRIBUTION CENTER

Clarke®, Secaucus, NJ 07094
74 Henry Street
(201) 864-5503

Clarke®
Clarke American Sanders
A.L. Cook
Customer Service Headquarters and Factory
2100 Highway 265
Springdale, Arkansas 72764
(479) 750-1000
Technical Service
1-800-356-7274

European Locations

PRODUCTION FACILITIES

ALTO Danmark A/S, Aalborg
Blytaekervej 2
DK-9000 Aalborg
+45 72 18 21 00

ALTO Danmark A/S, Hadsund
Industri kvarteret
DK-9560 Hadsund
+45 72 18 21 00

SALES SUBSIDIARIES

Clarke® Canada Ltd., Rexdale Ontario
24 Constellation Ct.
(416) 675-5830

ALTO Overseas Inc., Sydney (Australia)
1B/8 Resolution Drive
Caringbah NSW 2229
+61 2 9524 6122

ALTO Cleaning Systems Asia Pte Ltd., Singapore
No. 17 Link Road
Singapore 619034
+65 268 1006

ALTO Deutschland GmbH, Bellenberg (Germany)
Guido-Oberdorfer-Straße 2-8
89287 Bellenberg
+49 0180 5 37 37 37

ALTO Cleaning Systems (UK) Ltd., Penrith
Gilwilly Industrial Estate
Penrith
Cumbria CA11 9BN
+44 1768 868 995

ALTO France S.A. Strasbourg
B.P. 44, 4 Place d'Ostwald
F-67036 Strasbourg
Cedex 2
+33 3 8828 8400

ALTO Nederland B.V.
Postbus 65
3370 AB Hardinxveld-Giessendam
The Netherlands
+31 184 677 200

ALTO Sverige AB, Molndal (Sweden)
Aminogatan 18
Box 4029
S-431 04 Molndal
+46 31 706 73 00

ALTO Norge A/S, Oslo (Norway)
Bjornerudveien 24
N-1266
+47 2275 1770

Clarke American Sanders U. S. Warranty

This Clarke American Sanders Industrial/Commercial Product is warranted to be free from defects in materials and workmanship under normal use and service for a period of one year from the date of purchase, when operated and maintained in accordance with Clarke American Sanders's Maintenance and Operations Instructions.

This warranty is extended only to the original purchaser for use of the product. It does not cover normal wear parts such as electrical cable or V-belts.

If difficulty develops with the product, you should:

(a). Contact the nearest authorized Clarke American Sanders repair location or contact the Clarke American Sanders Service Operations Department, 2100 Highway 265, Springdale, Arkansas 72764, for the nearest authorized Clarke American Sanders repair location. Only these locations are authorized to make repairs to the product under this warranty.

(b). Return the product to the nearest Clarke American Sanders repair location. Transportation charges to and from the repair location must be prepaid by the purchaser.

(c). Clarke American Sanders will repair the product and or replace any defective parts without charge within a reasonable time after receipt of the product.

Clarke American Sanders's liability under this warranty is limited to repair of the product and/or replacement of parts and is given to purchaser in lieu of all other remedies, including INCIDENTAL AND CONSEQUENTIAL DAMAGES.

THERE ARE NO EXPRESS WARRANTIES OTHER THAN THOSE SPECIFIED HEREIN. THERE ARE NO WARRANTIES WHICH EXTEND BEYOND THE DESCRIPTION OF THE FACE HEREOF. NO WARRANTIES, INCLUDING BUT NOT LIMITED TO WARRANTY OF MERCHANTABILITY, SHALL BE IMPLIED. A warranty registration card is provided with your Clarke American Sanders product. Return the card to assist Clarke American Sanders in providing the performance you expect from your new floor machine.

Clarke®, 2100 Highway 265, Springdale, Arkansas 72764

Clarke American Sanders reserves the right to make changes or improvements to its machine without notice.

Always use genuine Clarke American Sanders Parts for repair.

Clarke®

American Sanders

**2100 Highway 265
Springdale, Arkansas, 72764**